



Key

- Site
- Buffers from site at 500m intervals
- Unitary Authority boundary

0 250 500 750 1,000 m

Scale @ A3 - 1:20,000

Tetra Tech Cardiff
Atlantic House, Greenwood Close, Cardiff Gate Business Park, Cardiff CF23 8RD
Tel: +44 29 2082 9000 www.tetratechurope.com

© Crown copyright and database rights 2024 Ordnance Survey 0100031673.
© Tetra Tech Limited 2024. Registered in England number: 1959704

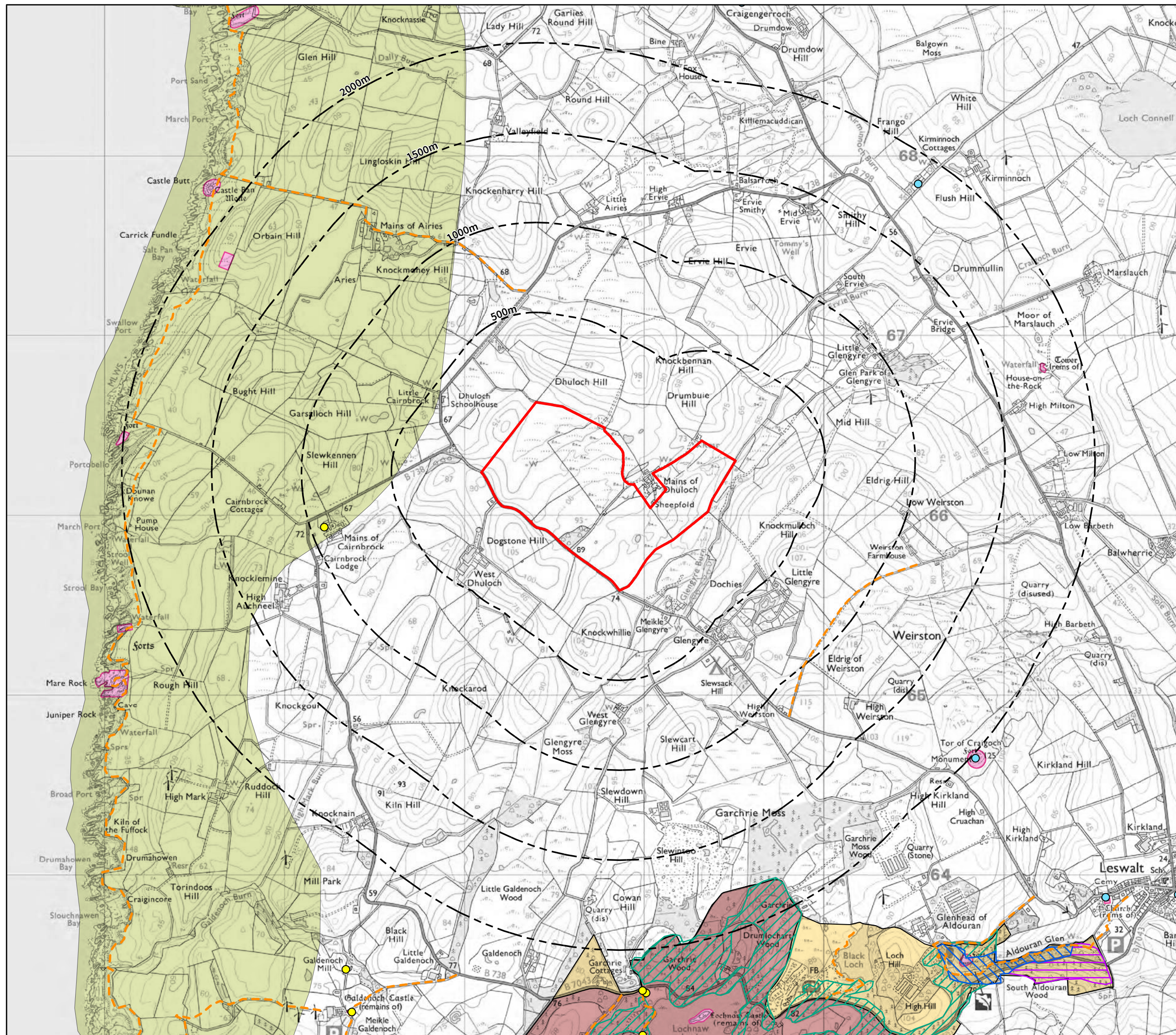
TTE Proj No	Drwn by	Date	Ch'ked by	Date	Appr'd by	Date	Scale @ A3	Suitability
B067657	TP	Dec 24	SP	Dec 24	MC	Dec 24	1:20,000	S3
Client Proj No	Originator	Vol/System	Level/Location	Type/Code	Role	Number	Revision	
---	TTE	00	XX	DR	L	0001	P01	

Aitken Turnbull Architects

Proposed Egg Production Facility, Mains of Dhuloch

Designations and Public Access

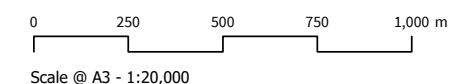
LA.02



- Key**
- Site
 - Buffers from site at 500m intervals
 - Regional Scenic Area
 - Scheduled Monuments
 - Gardens and Designated Landscapes
 - Non-Inventory Gardens

- Listed Buildings:**
- Category B
 - Category C

- Ancient Woodland Inventory:**
- Ancient (of semi-natural origin)
 - Long-Established (of plantation origin)
 - Other (on Roy map)
 - Core Paths



TTE Proj No	Drwn by	Date	Ch'ked by	Date	App'd by	Date	Scale @ A3	Suitability
B067657	TP	Dec 24	SP	Dec 24	MC	Dec 24	1:20,000	S3
Client Proj No	Originator	Vol/System	Level/Location	Type/Code	Role	Number	Revision	
---	TTE	00	XX	DR	L	0002	P01	

Tetra Tech Cardiff
Atlantic House, Greenwood Close, Cardiff Gate Business Park, Cardiff CF23 8RD
Tel: +44 29 2082 9000 www.tetrateteurope.com

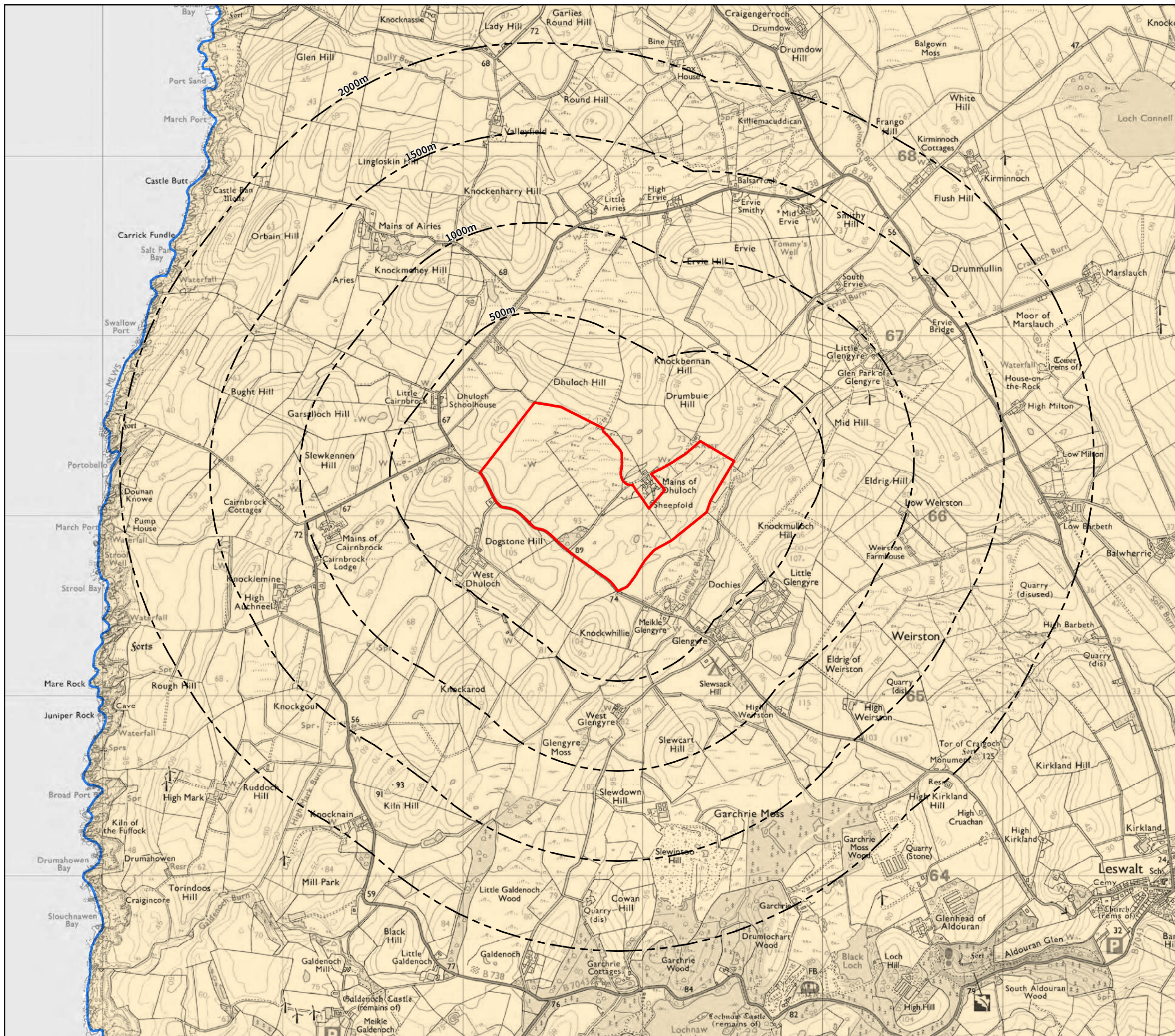
© Crown copyright and database rights 2024 Ordnance Survey 0100031673.

© Tetra Tech Limited 2024. Registered in England number: 1959704

Aitken Turnbull Architects

Proposed Egg Production Facility, Mains of Dhuloch

Landscape Character **LA.03**



Key

- Site
- Buffers from site at 500m intervals

NatureScot Landscape Character Assessment

Lowlands

- 156 - Peninsula

0 250 500 750 1,000 m

Scale @ A3 - 1:20,000

Tetra Tech Cardiff
Atlantic House, Greenwood Close, Cardiff Gate Business Park, Cardiff CF23 8RD
Tel: +44 29 2082 9000 www.tetratechurope.com

© Crown copyright and database rights 2024 Ordnance Survey 0100031673.
© Tetra Tech Limited 2024, Registered in England number: 1959704

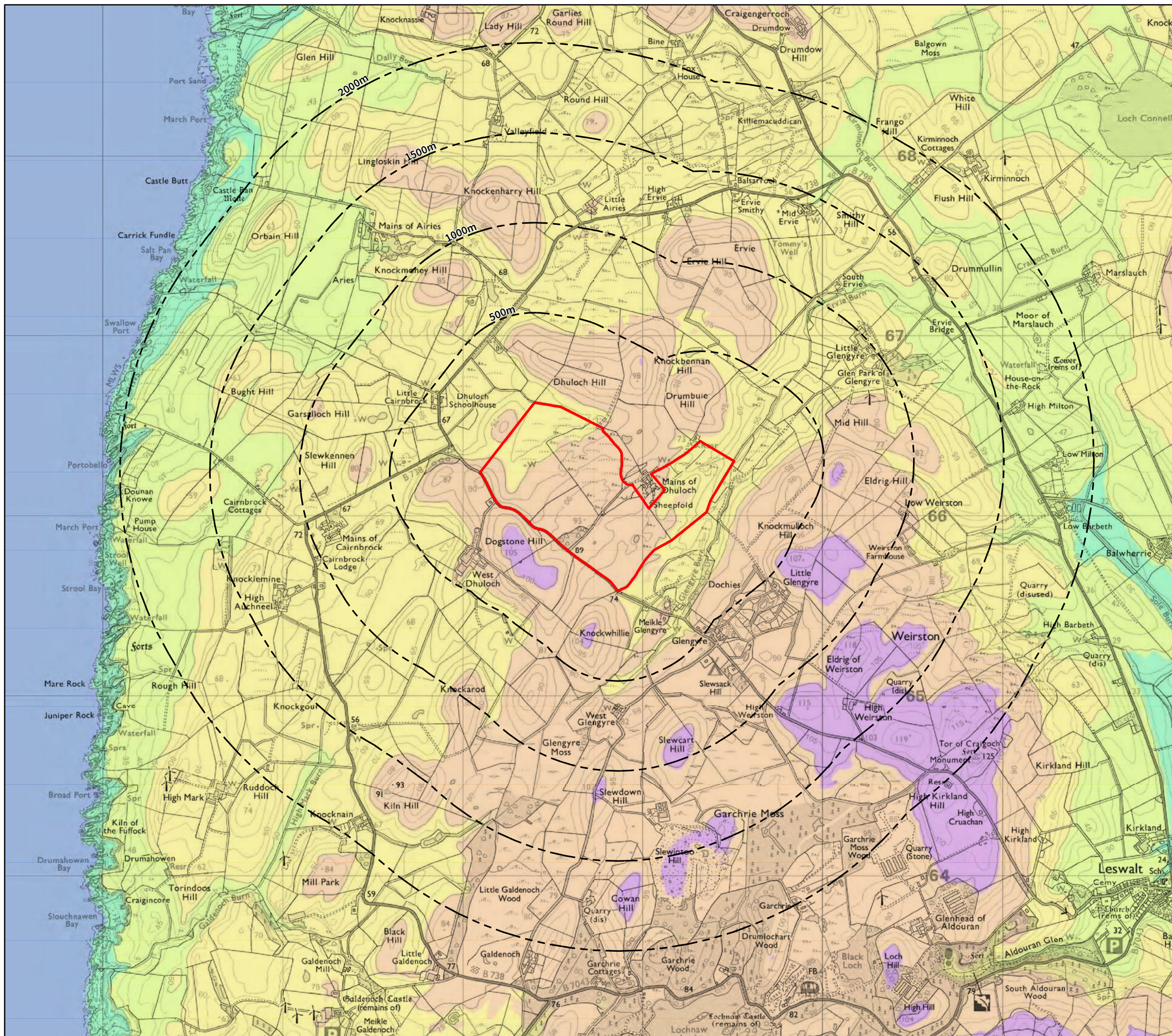
TTE Proj No	Drwn by	Date	Ch'ked by	Date	Appr'd by	Date	Scale @ A3	Suitability
B067657	TP	Dec 24	SP	Dec 24	MC	Dec 24	1:20,000	S3
Client Proj No	Originator	Vol/System	Level/Location	Type/Code	Role	Number	Revision	
---	TTE	00	XX	DR	L	0003	P01	

Aitken Turnbull Architects

Proposed Egg Production Facility, Mains of Dhuloch

Topography

LA.04



Key

- Site
- Buffers from site at 500m intervals

Topography (metres AOD)

- 1.2 m - 0 m
- 0.1 m - 25 m
- 25.1 m - 50 m
- 50.1 m - 75 m
- 75.1 m - 100 m
- 100.1 m - 125 m

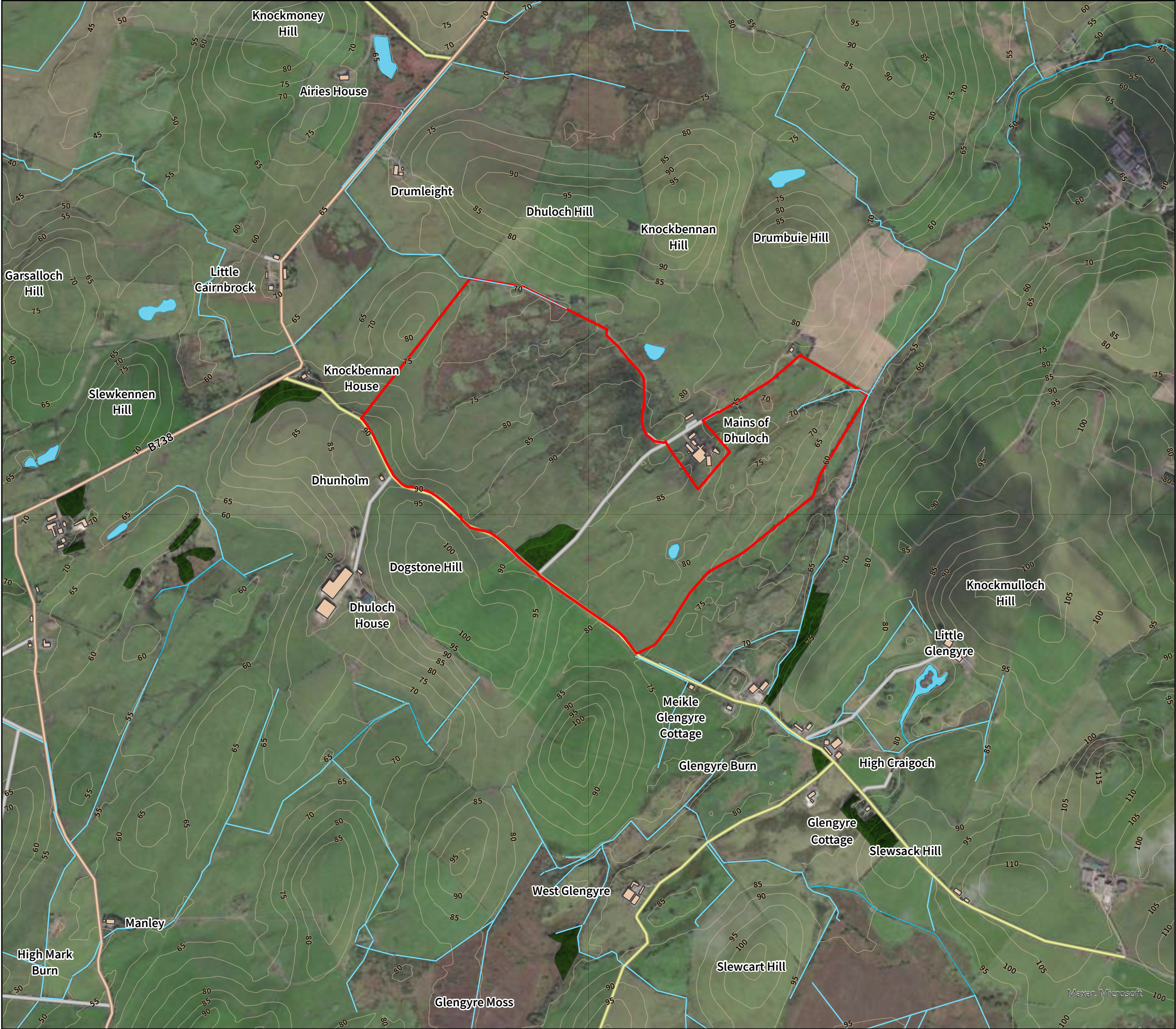
0 250 500 750 1,000 m

Scale @ A3 - 1:20,000

TTE Proj No B067657 TP Drwn by Dec 24 SP Ch'ked by Dec 24 MC App'd by Dec 24 MC Scale @ A3 1:20,000 Suitability S3
Client Proj No --- Originator TTE Vol/System 00 Level/Location XX Type/Code DR Role L Number 0004 Revision P01

Tetra Tech Cardiff
Atlantic House, Greenwood Close, Cardiff Gate Business Park, Cardiff CF23 8RD
Tel: +44 29 2082 9000 www.tetrateteurope.com

© Crown copyright and database rights 2024 Ordnance Survey 010031673.
© Tetra Tech Limited 2024. Registered in England number: 1959704



Aitken Turnbull Architects

Proposed Egg Production Facility, Mains of Dhuloch

Site Context **LA.05**

Key

- Site
- Contours at 5m intervals
- Watercourses
- Ponds
- Woodland
- B Road
- Minor Road
- Access

0 100 200 300 400 500 m

Scale @ A3 - 1:10,000

Tetra Tech Cardiff
Atlantic House, Greenwood Close, Cardiff Gate Business Park, Cardiff CF23 8RD
Tel: +44 29 2082 9000 www.tetrateteurope.com

© Crown copyright and database rights 2024 Ordnance Survey 0100031673.
© Tetra Tech Limited 2024. Registered in England number: 1959704

TTE Proj No	Drwn by	Date	Ch'ked by	Date	Appr'd by	Date	Scale @ A3	Suitability
B067657	TP	Dec 24	SP	Dec 24	MC	Dec 24	1:10,000	S3
Client Proj No	Originator	Vol/System	Level/Location	Type/Code	Role	Number	Revision	
---	TTE	00	XX	DR	L	0005	P01	

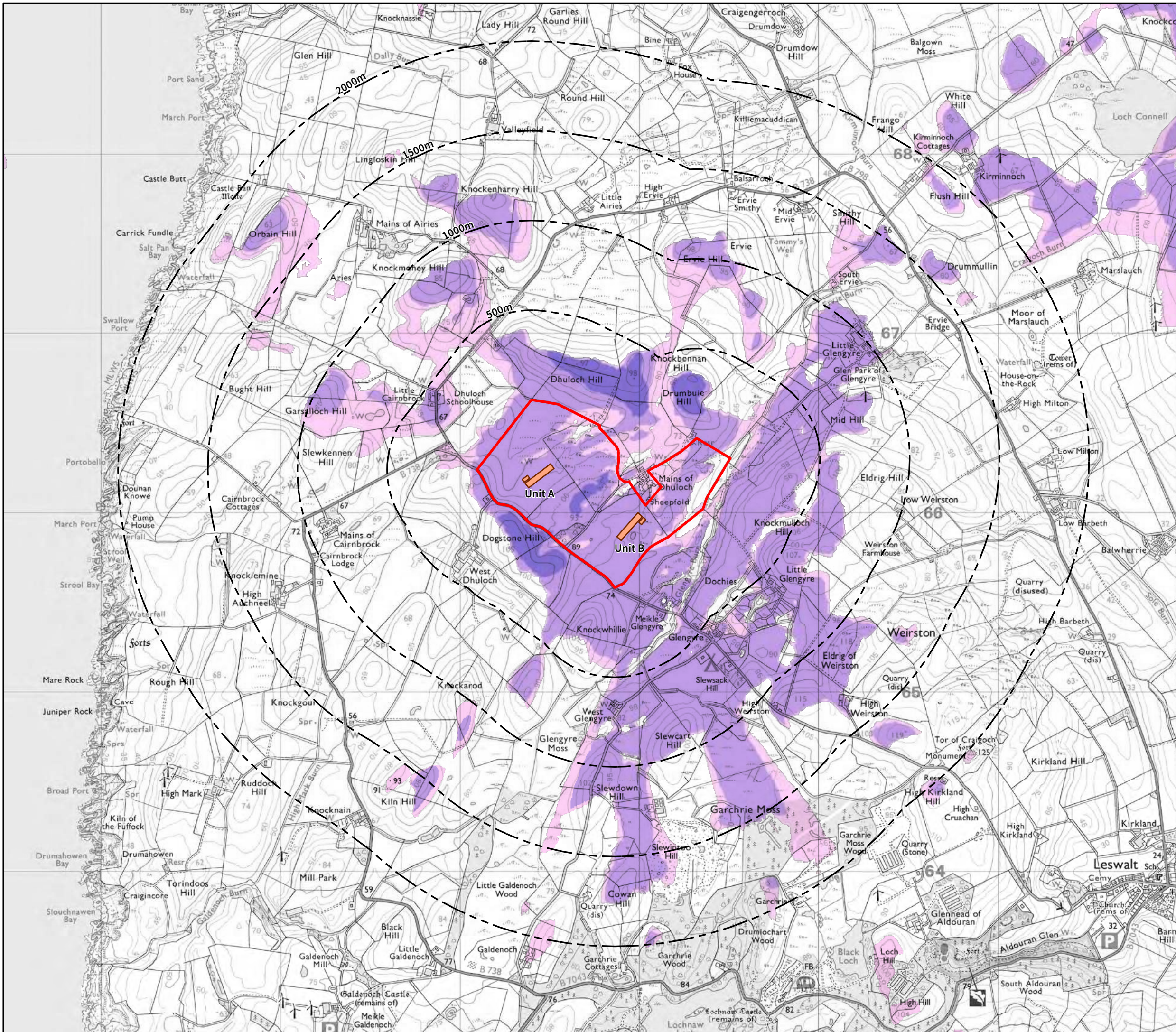
Aitken Turnbull Architects

Proposed Egg Production Facility, Mains of Dhuloch


Zone of Theoretical Visibility


LA.06-1


Bare earth scenario




Key


 Site


 Buffers from site at 500m intervals

 Proposed buildings

Zone of Theoretical Visibility
Bare earth scenario

 1 - 17 points visible


 18 - 33 points visible

 34 - 50 points visible

Note:
The ZTV has been generated using a 5m resolution model derived from OS Terrain 5 data. Each unit was modelled with 25 analysis points based on proposed development levels (in metres AOD) as follows:
Unit A
Poultry Shed - ridge at 86.09, eaves at 81.73 (18 points)
Dung Store - ridge at 85.42, eaves at 82.73 (6 points)
Silos - top of silo at 87.22 (1 point)
Unit B
Poultry Shed - ridge at 89.59, eaves at 85.23 (18 points)
Dung Store - ridge at 88.92, eaves at 86.23 (6 points)
Silos - top of silo at 90.72 (1 point)
Viewer height is set at 2m above existing ground level.

02505007501,000 m

Scale @ A3 - 1:20,000

North

TTE Proj No	Drwn by	Date	Ch'ked by	Date	Appr'd by	Date	Scale @ A3	Suitability
B067657	TP	Dec 24	SP	Dec 24	MC	Dec 24	1:20,000	S3
Client Proj No	Originator	Vol/System	Level/Location	Type/Code	Role	Number	Revision	
---	TTE	00	XX	DR	L	0006	P01	

Tetra Tech Cardiff
Atlantic House, Greenwood Close, Cardiff Gate Business Park, Cardiff CF23 8RD
Tel: +44 29 2082 9000 www.tetratetecheurope.com

© Crown copyright and database rights 2024 Ordnance Survey 0100031673.
© Tetra Tech Limited 2024. Registered in England number: 1959704

Aitken Turnbull Architects

Proposed Egg Production Facility, Mains of Dhuloch

Zone of Theoretical Visibility LA.06-2

Existing screening features included

Key

- Site
- Buffers from site at 500m intervals
- Proposed buildings
- Existing buildings
- Existing woodland

Zone of Theoretical Visibility

Existing screening included

- 1 - 17 points visible
- 18 - 33 points visible
- 34 - 50 points visible

Note:
The ZTV has been generated using a 5m resolution model derived from OS Terrain 5 data. Existing woodland and buildings were modelled at 10 metres and 8 metres in height respectively. Each unit was modelled with 25 analysis points based on proposed development levels (in metres AOD) as follows:

Unit A
Poultry Shed - ridge at 86.09, eaves at 81.73 (18 points)
Dung Store - ridge at 85.42, eaves at 82.73 (6 points)
Silos - top of silo at 87.22 (1 point)

Unit B
Poultry Shed - ridge at 89.59, eaves at 85.23 (18 points)
Dung Store - ridge at 88.92, eaves at 86.23 (6 points)
Silos - top of silo at 90.72 (1 point)

Viewer height is set at 2m above existing ground level.

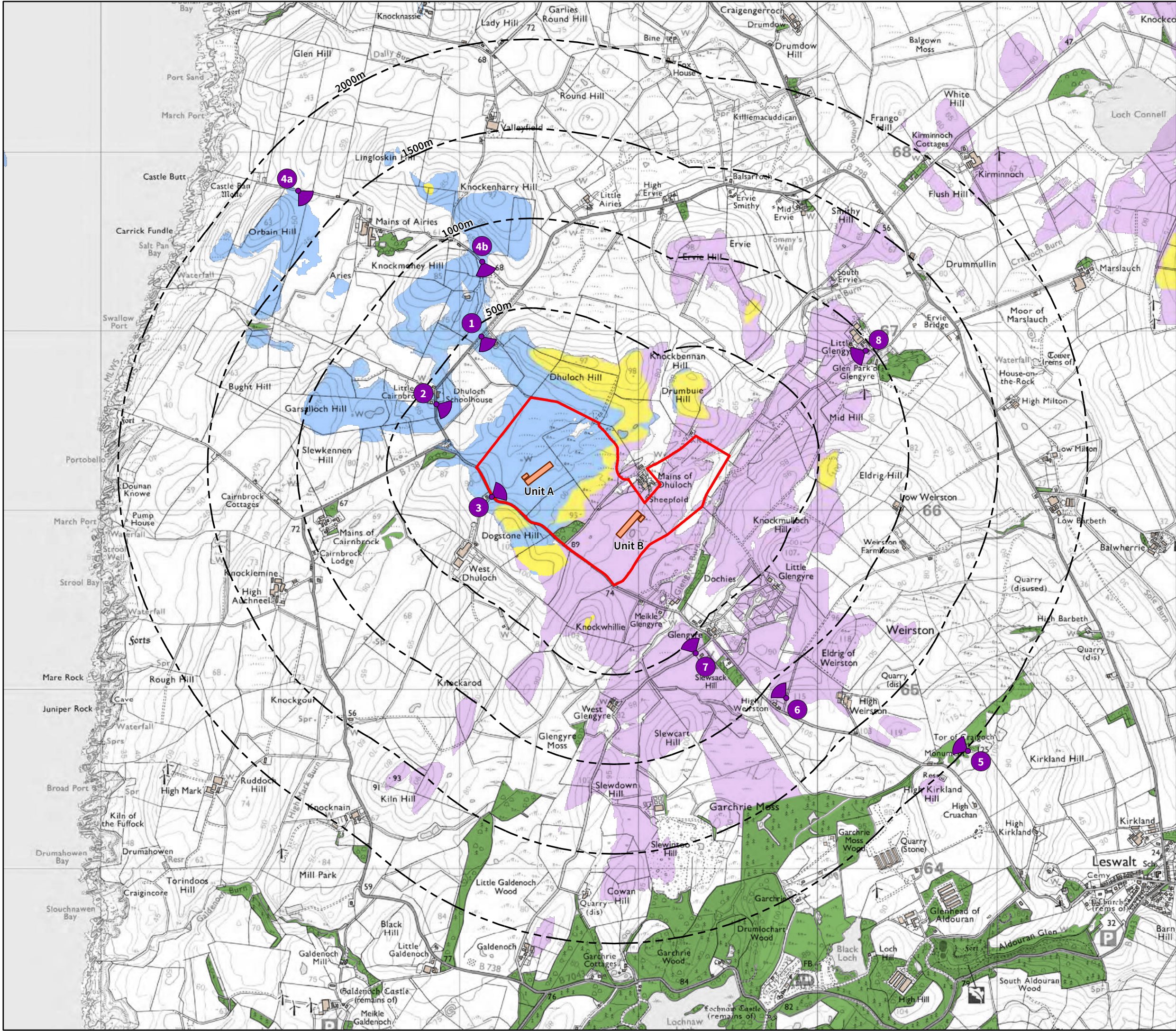
Aitken Turnbull Architects

Proposed Egg Production Facility, Mains of Dhuloch

Zone of Theoretical Visibility

LA.06-3

Intervisibility of proposed units



Key

Site

Buffers from site at 500m intervals

Proposed buildings

Existing buildings

Existing woodland

Zone of Theoretical Visibility

Visibility of proposed units

Unit A visible only

Unit B visible only

Both units visible

Viewpoint locations

Note:
The ZTV has been generated using a 5m resolution model derived from OS Terrain 5 data. Existing woodland and buildings were modelled at 10 metres and 8 metres in height respectively. Each unit was modelled with 25 analysis points based on proposed development levels (in metres AOD) as follows:

Unit A
Poultry Shed - ridge at 86.09, eaves at 81.73 (18 points)
Dung Store - ridge at 85.42, eaves at 82.73 (6 points)
Silos - top of silo at 87.22 (1 point)

Unit B
Poultry Shed - ridge at 89.59, eaves at 85.23 (18 points)
Dung Store - ridge at 88.92, eaves at 86.23 (6 points)
Silos - top of silo at 90.72 (1 point)

Viewer height is set at 2m above existing ground level.



Viewpoint Photograph

View flat at a comfortable arm's length

Viewpoint information:

OS reference:	E198123 N566969	Horizontal field of view:	90° (cylindrical projection)	Camera:	EOS 6D Mk II
Ground level:	64.1m AOD	Vertical field of view:	27°	Lens:	50mm (Canon EF 50mm f/1.8 II)
Direction of view:	145°	Principal distance:	812.5mm	Camera height:	1.6m AGL
Distance to site:	438m	Paper size:	840 x 297mm (extended A3)	Date and time:	27/11/2024 14:12
		Correct printed image size:	820 x 250mm		

B067657EggProductionPlantNewpointPhotographs1.indd

Tetra Tech Cardiff
5th Floor, Longcross Court,
47 Newport Road,
Cardiff, CF24 0AD
Tel: +44 29 2082 9000
www.tetratech europe.com

TTE Project Number	Drawn By	Date	Checked By	Date	Approved By	Date	Stage
784-B067657	JKC	Dec 24	SP	Dec 24	MC	Dec 24	-
Client Project Number	Originator	Volume/System	Level/Location	Type/Code	Role	Number	Revision
-	TTE	-	XX	-	DR	-	L - 0009 P01

PROPOSED EGG PRODUCTION FACILITY
MAINS OF DHULOCH, KIRKCOLM

Viewpoint Photographs (LA.07-1):
Viewpoint 01 - B738 by Drumleight, north
west of the site

Page size:
Extended A3 page
840 x 297mm

Aitken Turnbull
Architects





Viewpoint Photograph

View flat at a comfortable arm's length

Viewpoint information:

OS reference: E197871 N566591

Ground level: 70m AOD

Direction of view: 120°

Distance to site: 393m

Horizontal field of view: 90° (cylindrical projection)

Vertical field of view: 27°

Principal distance: 812.5mm

Paper size: 840 x 297mm (extended A3)

Correct printed image size: 820 x 250mm

Camera: EOS 6D Mk II

Lens: 50mm (Canon EF 50mm f/1.8 II)

Camera height: 1.6m AGL

Date and time: 27/11/2024 13:33

B067657EggProductionPlantNewpointPhotographs1.indd

Tetra Tech Cardiff
5th Floor, Longcross Court,
47 Newport Road,
Cardiff, CF24 0AD
Tel: +44 29 2082 9000
www.tetratecheurope.com

TTE Project Number	Drawn By	Date	Checked By	Date	Approved By	Date	Stage
784-B067657	JKC	Dec 24	SP	Dec 24	MC	Dec 24	-
Client Project Number	Originator	Volume/System	Level/Location	Type/Code	Role	Number	Revision
-	TTE	-	XX	-	DR	-	L - 0010 P01

PROPOSED EGG PRODUCTION FACILITY
MAINS OF DHULOCH, KIRKCOLM
Viewpoint Photographs (LA.07-2):
Viewpoint 02 - B738 by Little Cairnbrock,
west of the site

Page size:
Extended A3 page
840 x 297mm

Aitken Turnbull
Architects





Viewpoint Photograph

View flat at a comfortable arm's length

Viewpoint information:

OS reference: E198180 N566074

Ground level: 88m AOD

Direction of view: 60°

Distance to site: 6m

Horizontal field of view: 90° (cylindrical projection)

Vertical field of view: 27°

Principal distance: 812.5mm

Paper size: 840 x 297mm (extended A3)

Correct printed image size: 820 x 250mm

Camera: EOS 6D Mk II

Lens: 50mm (Canon EF 50mm f/1.8 II)

Camera height: 1.6m AGL

Date and time: 27/11/2024 12:19

B067657EggProductionPlantViewpointPhotographs1.indd

Tetra Tech Cardiff
5th Floor, Longcross Court,
47 Newport Road,
Cardiff, CF24 0AD
Tel: +44 29 2082 9000
www.tetratecheurope.com

TTE Project Number	Drawn By	Date	Checked By	Date	Approved By	Date	Stage
784-B067657	JKC	Dec 24	SP	Dec 24	MC	Dec 24	-
Client Project Number	Originator	Volume/System	Level/Location	Type/Code	Role	Number	Revision
-	TTE	- XX	- XX	- DR	- L	- 0011	P01

PROPOSED EGG PRODUCTION FACILITY
MAINS OF DHULOCH, KIRKCOLM

Viewpoint Photographs (LA.07-3):
Viewpoint 03 - Unnamed road by
Dhunholm, south west of the site

Page size:
Extended A3 page
840 x 297mm

Aitken Turnbull
Architects





Viewpoint Photograph

View flat at a comfortable arm's length

Viewpoint information:

OS reference: E197100 N567782
Ground level: 44.2m AOD
Direction of view: 135°
Distance to site: 1737m

Horizontal field of view: 90° (cylindrical projection)
Vertical field of view: 27°
Principal distance: 812.5mm
Paper size: 840 x 297mm (extended A3)
Correct printed image size: 820 x 250mm

Camera: EOS 6D Mk II
Lens: 50mm (Canon EF 50mm f/1.8 II)
Camera height: 1.6m AGL
Date and time: 27/11/2024 13:58

B067657EggProductionPlantNewpointPhotographs1.indd

Tetra Tech Cardiff
5th Floor, Longcross Court,
47 Newport Road,
Cardiff, CF24 0AD
Tel: +44 29 2082 9000
www.tetrateteurope.com

TTE Project Number	Drawn By	Date	Checked By	Date	Approved By	Date	Stage
784-B067657	JKC	Dec 24	SP	Dec 24	MC	Dec 24	-
Client Project Number	Originator	Volume/System	Level/Location	Type/Code	Role	Number	Revision
-	TTE	- XX	- XX	- DR	- L	- 0012	P01

PROPOSED EGG PRODUCTION FACILITY
MAINS OF DHULOCH, KIRKCOLM

Viewpoint Photographs (LA.07-4):
Viewpoint 04a - Corsewall Lighthouse Core
Path, ID – KIRC/343/2, north west of the site

Page size:
Extended A3 page
840 x 297mm

Aitken Turnbull
Architects





Viewpoint Photograph

View flat at a comfortable arm's length

Viewpoint information:

OS reference: E198127 N567386
Ground level: 65.8m AOD
Direction of view: 160°
Distance to site: 805m

Horizontal field of view: 90° (cylindrical projection)
Vertical field of view: 27°
Principal distance: 812.5mm
Paper size: 840 x 297mm (extended A3)
Correct printed image size: 820 x 250mm
Camera: EOS 6D Mk II
Lens: 50mm (Canon EF 50mm f/1.8 II)
Camera height: 1.6m AGL
Date and time: 27/11/2024 13:48

B067657EggProductionPlantNewpointPhotographs1.indd

Tetra Tech Cardiff
5th Floor, Longcross Court,
47 Newport Road,
Cardiff, CF24 0AD
Tel: +44 29 2082 9000
www.tetratetecheurope.com

TTE Project Number	Drawn By	Date	Checked By	Date	Approved By	Date	Stage
784-B067657	JKC	Dec 24	SP	Dec 24	MC	Dec 24	-
Client Project Number	Originator	Volume/System	Level/Location	Type/Code	Role	Number	Revision
-	TTE	- XX	- XX	- DR	- L	- 0013	P01

PROPOSED EGG PRODUCTION FACILITY
MAINS OF DHULOCH, KIRKCOLM
Viewpoint Photographs (LA.07-5):
Viewpoint 04b - Corsewall Lighthouse Core
Path, ID – KIRC/343/2, north west of the site

Page size:
Extended A3 page
840 x 297mm

Aitken Turnbull
Architects





Viewpoint Photograph

View flat at a comfortable arm's length

Viewpoint information:

OS reference:	E200838 N564656	Horizontal field of view:	90° (cylindrical projection)	Camera:	EOS 6D Mk II
Ground level:	124.8m AOD	Vertical field of view:	27°	Lens:	50mm (Canon EF 50mm f/1.8 II)
Direction of view:	300°	Principal distance:	812.5mm	Camera height:	1.6m AGL
Distance to site:	2,015m	Paper size:	840 x 297mm (extended A3)	Date and time:	27/11/2024 15:15
		Correct printed image size:	820 x 250mm		

B067657EggProductionPlantNewpointPhotographs1.indd

Tetra Tech Cardiff
5th Floor, Longcross Court,
47 Newport Road,
Cardiff, CF24 0AD
Tel: +44 29 2082 9000
www.tetratech.europa.com

TTE Project Number	Drawn By	Date	Checked By	Date	Approved By	Date	Stage
784-B067657	JKC	Dec 24	SP	Dec 24	MC	Dec 24	-
Client Project Number	Originator	Volume/System	Level/Location	Type/Code	Rule	Number	Revision
-	TTE	- XX	- XX	- DR	- L	- 0014	P01

PROPOSED EGG PRODUCTION FACILITY
MAINS OF DHULOCH, KIRKCOLM
Viewpoint Photographs (LA.07-6):
Viewpoint 05 - Tor of Craigoch Scheduled
Monument and Agnew Monument listed
building and landmark, south west of the site

Page size:
Extended A3 page
840 x 297mm

Aitken Turnbull
Architects





Viewpoint Photograph

View flat at a comfortable arm's length

Viewpoint information:

OS reference:	E199824 N564952	Horizontal field of view:	90° (cylindrical projection)	Camera:	EOS 6D Mk II
Ground level:	110.2m AOD	Vertical field of view:	27°	Lens:	50mm (Canon EF 50mm f/1.8 II)
Direction of view:	315°	Principal distance:	812.5mm	Camera height:	1.6m AGL
Distance to site:	1,120m	Paper size:	840 x 297mm (extended A3)	Date and time:	27/11/2024 13:15
		Correct printed image size:	820 x 250mm		

B067657EggProductionPlantNewpointPhotographs1.indd

Tetra Tech Cardiff
5th Floor, Longcross Court,
47 Newport Road,
Cardiff, CF24 0AD
Tel: +44 29 2082 9000
www.tetratecheurope.com

TTE Project Number	Drawn By	Date	Checked By	Date	Approved By	Date	Stage
784-B067657	JKC	Dec 24	SP	Dec 24	MC	Dec 24	-
Client Project Number	Originator	Volume/System	Level/Location	Type/Code	Role	Number	Revision
-	TTE	-	XX	-	DR	-	L - 0015 P01

PROPOSED EGG PRODUCTION FACILITY
MAINS OF DHULOCH, KIRKCOLM

Page size:
Extended A3 page
840 x 297mm

Viewpoint Photographs (LA.07-7):
Viewpoint 06 - Leswalt Core Path, ID – KIRC/357/1,
nr High Weirston House, south east of the site

Aitken Turnbull
Architects





Viewpoint Photograph

View flat at a comfortable arm's length

Viewpoint information:

OS reference:	E199319 N565201	Horizontal field of view:	90° (cylindrical projection)	Camera:	EOS 6D Mk II
Ground level:	80.5m AOD	Vertical field of view:	27°	Lens:	50mm (Canon EF 50mm f/1.8 II)
Direction of view:	330°	Principal distance:	812.5mm	Camera height:	1.6m AGL
Distance to site:	573m	Paper size:	840 x 297mm (extended A3)	Date and time:	27/11/2024 12:46
		Correct printed image size:	820 x 250mm		

B067657EggProductionPlantNewpointPhotographs1.indd

Tetra Tech Cardiff
5th Floor, Longcross Court,
47 Newport Road,
Cardiff, CF24 0AD
Tel: +44 29 2082 9000
www.tetrateteurope.com

TTE Project Number	Drawn By	Date	Checked By	Date	Approved By	Date	Stage
784-B067657	JKC	Dec 24	SP	Dec 24	MC	Dec 24	-
Client Project Number	Originator	Volume/System	Level/Location	Type/Code	Role	Number	Revision
-	TTE	- XX	- XX	- DR	- L	- 0016	P01

PROPOSED EGG PRODUCTION FACILITY
MAINS OF DHULOCH, KIRKCOLM

**Viewpoint Photographs (LA.07-8):
Viewpoint 07 - Glengyre, south east of
the site**

Page size:
Extended A3 page
840 x 297mm

Aitken Turnbull
Architects





Viewpoint Photograph

View flat at a comfortable arm's length

Viewpoint information:

OS reference: E200268 N566889

Ground level: 65.5m AOD

Direction of view: 240°

Distance to site: 960m

Horizontal field of view: 90° (cylindrical projection)

Vertical field of view: 27°

Principal distance: 812.5mm

Paper size: 840 x 297mm (extended A3)

Correct printed image size: 820 x 250mm

Camera: EOS 6D Mk II

Lens: 50mm (Canon EF 50mm f/1.8 II)

Camera height: 1.6m AGL

Date and time: 27/11/2024 14:50

B067657EggProductionPlantNewpointPhotographs1.indd

Tetra Tech Cardiff
5th Floor, Longcross Court,
47 Newport Road,
Cardiff, CF24 0AD
Tel: +44 29 2082 9000
www.tetratech.europa.com

TTE Project Number	Drawn By	Date	Checked By	Date	Approved By	Date	Stage
784-B067657	JKC	Dec 24	SP	Dec 24	MC	Dec 24	-
Client Project Number	Originator	Volume/System	Level/Location	Type/Code	Rule	Number	Revision
-	TTE	- XX	- XX	- DR	- L	- 0017	P01

PROPOSED EGG PRODUCTION FACILITY
MAINS OF DHULOCH, KIRKCOLM

Viewpoint Photographs (LA.07-9):
Viewpoint 08 - Little Glengyre, north east
of the site

Page size:
Extended A3 page
840 x 297mm

Aitken Turnbull
Architects

