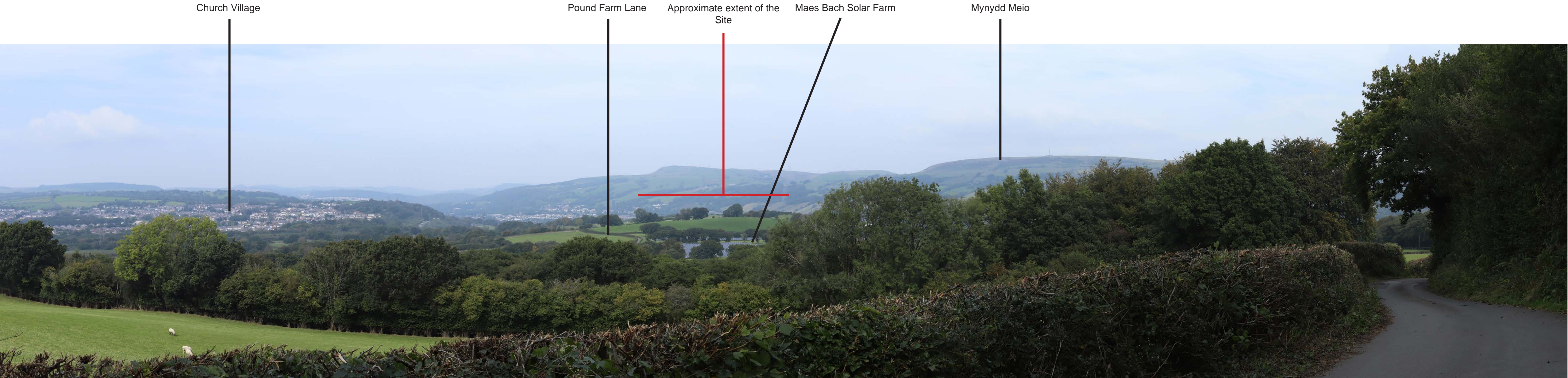


MAES BACH ENERGY STORAGE SYSTEM

PRE-APPLICATION CONSULTATION LANDSCAPE AND VISUAL IMPACT ASSESSMENT PART 7 of 7



Prepared for Net Zero Twenty Five
November 2024

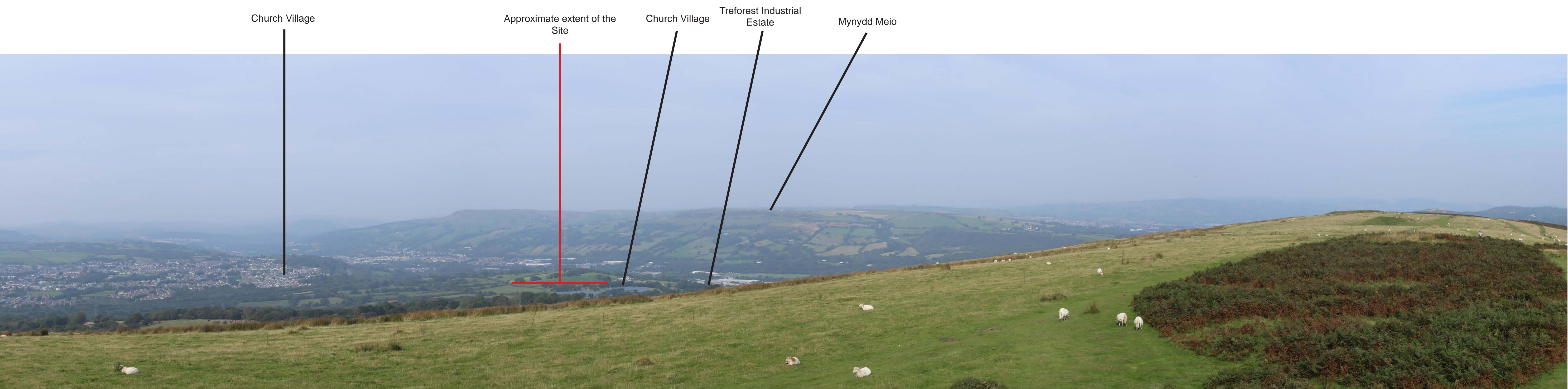


Viewpoint 7: View from Pound Farm Lane / PRow (footpath) DRE/77/1, looking north-east



Viewpoint 8: View from PRow (footpath) DRE/63/10 looking north-east

<div>Notes:</div> <div><ul style="list-style-type: none">Camera: Canon 6D MKIICamera Height: 1.6mWeather: Clear with sunny spellsPhotos Taken: 19/09/2024</div>	<div></div> <div><ul style="list-style-type: none">Type 1 visualisation prepared in accordance with LI Technical Guidance Note 06/19.This visualisation represents the context of the scheme and key features.The viewpoint locations were recorded using a handheld GPS.</div>	<div>Date:</div> <div>08/10/2024</div>	<div>Project Name:</div> <div>Maes Bach ESS</div>	<div>Title:</div> <div>Viewpoint 7 and 8</div>	<div>RHLA LTD</div> <div>Landscape Planning Consultancy</div>
		<div>Scale:</div> <div>N/A</div>	<div>Client Name:</div> <div>Net Zero Twenty Five Limited</div>	<div>Figure Ref:</div> <div>Figure 9</div>	



Viewpoint 9: View from Garth Hill looking north



Viewpoint 10: View from Penycloedcae Road looking south-east

<div>Notes:</div> <ul style="list-style-type: none">• Camera: Canon 6D MKII• Camera Height: 1.6m• Weather: Clear with sunny spells• Photos Taken: 19/09/2024 <div><ul style="list-style-type: none">• Type 1 visualisation prepared in accordance with LI Technical Guidance Note 06/19.• This visualisation represents the context of the scheme and key features.• The viewpoint locations were recorded using a handheld GPS.</div>	Date: 08/10/2024	Project Name: Maes Bach ESS	Title: Viewpoint 9 and 10	<div>RHLA LTD</div> <div>Landscape Planning Consultancy</div>
	Scale: N/A	Client Name: Net Zero Twenty Five Limited	Figure Ref: Figure 10	



Viewpoint 11: View from Maindy Road looking south-east

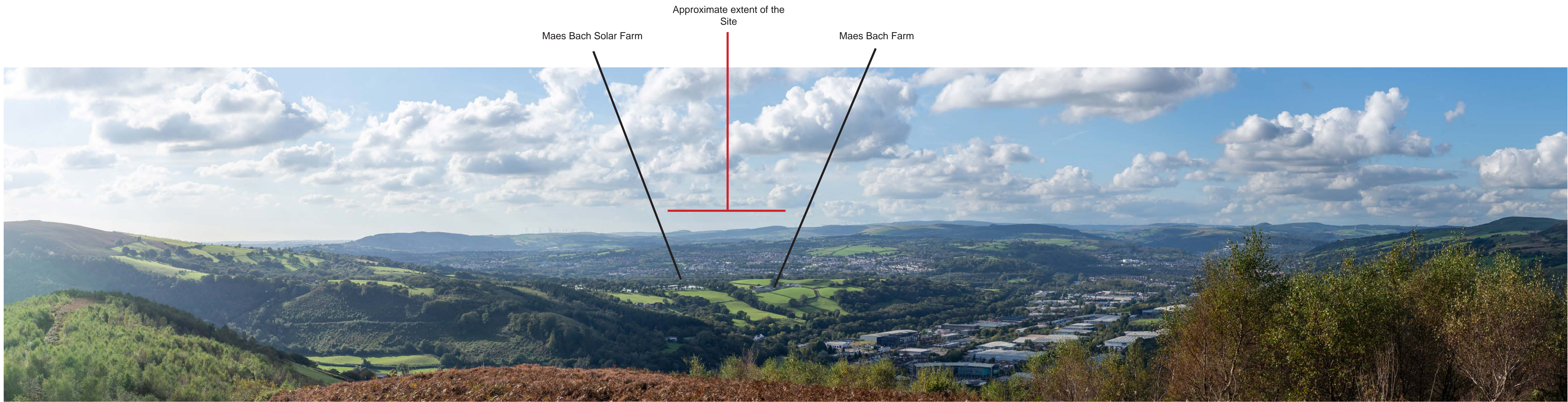


Viewpoint 12: View from open access land across Mynydd Meio, looking south-west

Notes: <ul style="list-style-type: none">• Camera: Canon 6D MKII• Camera Height: 1.6m• Weather: Clear with sunny spells• Photos Taken: 19/09/2024 <ul style="list-style-type: none">• Type 1 visualisation prepared in accordance with LI Technical Guidance Note 06/19.• This visualisation represents the context of the scheme and key features.• The viewpoint locations were recorded using a handheld GPS.	Date: 08/10/2024	Project Name: Maes Bach ESS	Title: Viewpoint 11 and 12	RHLA LTD Landscape Planning Consultancy
	Scale: N/A	Client Name: Net Zero Twenty Five Limited	Figure Ref: Figure 11	

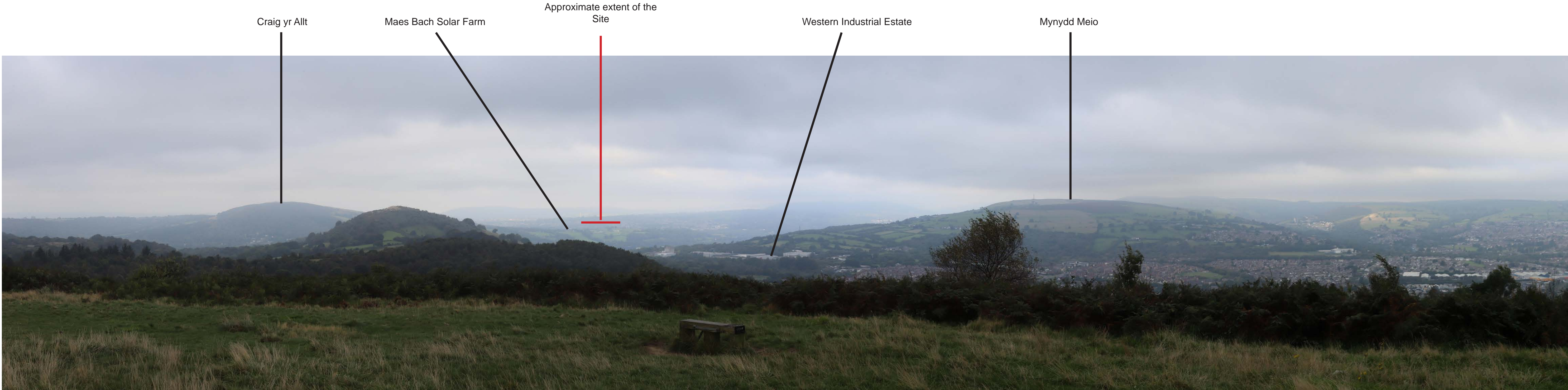


Viewpoint 13: View from PRow (footpath) PTE/FP122/1 looking west



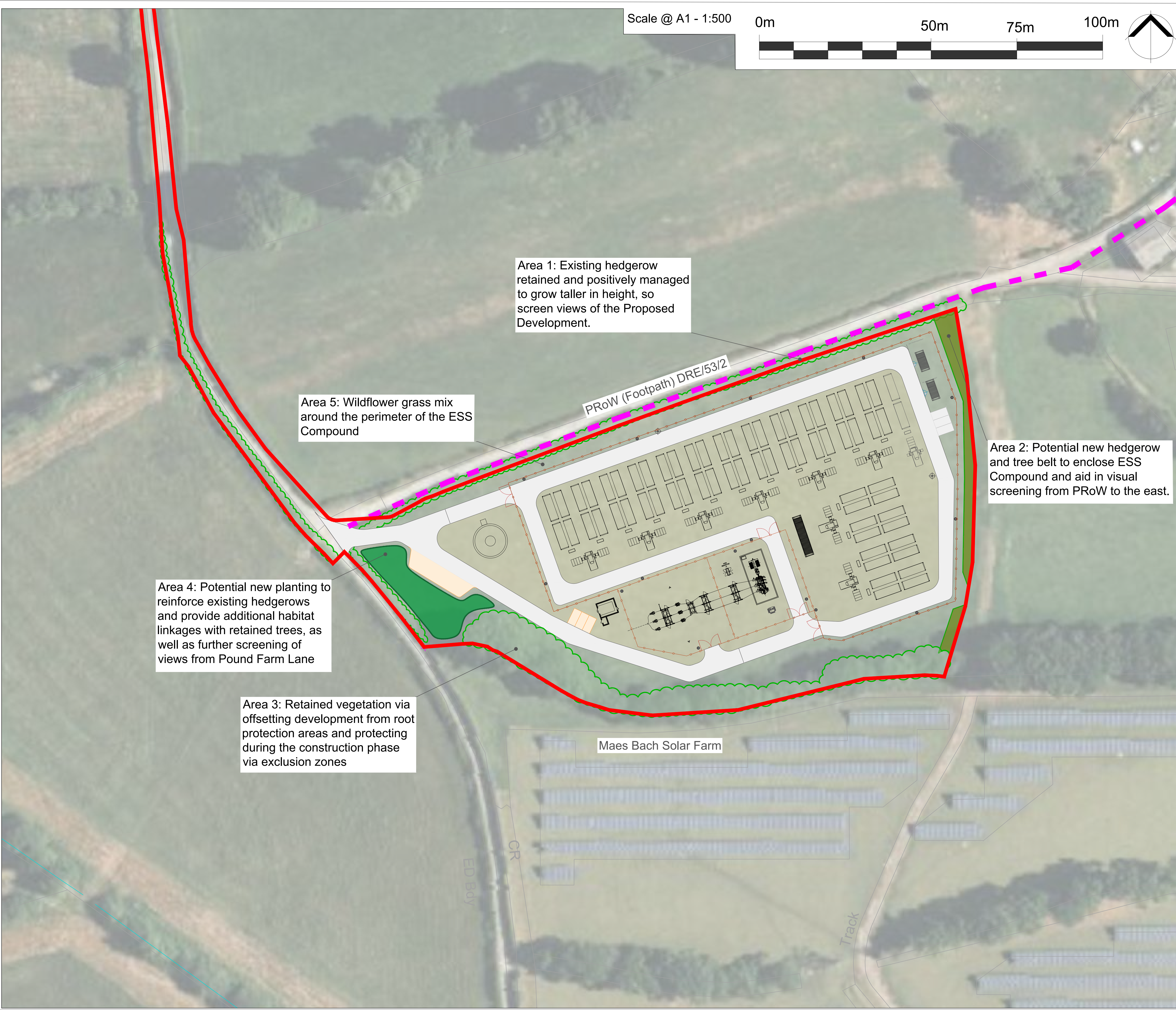
Viewpoint 14: View from Craig yr Allt, looking north-west

Notes: <ul style="list-style-type: none">• Camera: Canon 6D MKII• Camera Height: 1.6m• Weather: Clear with sunny spells• Photos Taken: 19/09/2024	<ul style="list-style-type: none">• Type 1 visualisation prepared in accordance with LI Technical Guidance Note 06/19.• This visualisation represents the context of the scheme and key features.• The viewpoint locations were recorded using a handheld GPS.	Date: 08/10/2024	Project Name: Maes Bach ESS	Title: Viewpoint 13 and 14	RHLA LTD Landscape Planning Consultancy
		Scale: N/A	Client Name: Net Zero Twenty Five Limited	Figure Ref: Figure 12	



Viewpoint 15: View from Caerphilly Common, looking west

Notes: <ul style="list-style-type: none">• Camera: Canon 6D MKII• Camera Height: 1.6m• Weather: Clear with sunny spells• Photos Taken: 19/09/2024	<ul style="list-style-type: none">• Type 1 visualisation prepared in accordance with LI Technical Guidance Note 06/19.• This visualisation represents the context of the scheme and key features.• The viewpoint locations were recorded using a handheld GPS.	Date: 08/10/2024	Project Name: Maes Bach ESS	Title: Viewpoint 15	<div>RHLA LTD</div> <div>Landscape Planning Consultancy</div>
		Scale: N/A	Client Name: Net Zero Twenty Five Limited	Figure Ref: Figure 13	



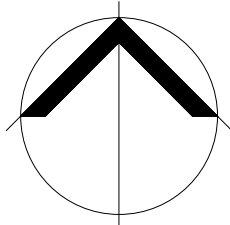
Scale @ A1 - 1:500

0m

50m

75m

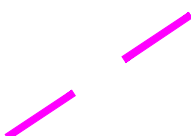
100m



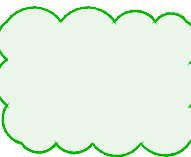
LEGEND



The Site (the Site and surrounding landscape are within a Special Landscape Area)



Public Right of Way



Existing Vegetation Retained

Area 1: Existing hedgerow retained and positively managed to grow taller in height, so screen views of the Proposed Development.

Area 5: Wildflower grass mix around the perimeter of the ESS Compound

PRoW (Footpath) DRE/53/2

Area 2: Potential new hedgerow and tree belt to enclose ESS Compound and aid in visual screening from PRoW to the east.

Area 4: Potential new planting to reinforce existing hedgerows and provide additional habitat linkages with retained trees, as well as further screening of views from Pound Farm Lane

Area 3: Retained vegetation via offsetting development from root protection areas and protecting during the construction phase via exclusion zones

Maes Bach Solar Farm

RHLA LTD

Landscape Planning Consultancy

CLIENT

Net Zero Twenty Five Limited

PROJECT

Maes Bach ESS

TITLE

Concept Landscape Masterplan

DRAWN BY

JG

CHECKED BY

RH

SCALE @ A1

Refer to Plan

DATE

22/10/24

PROJECT NO.

NZFL/0010

DRAWING NO.

Figure 14

REV.

Based upon the Ordnance Survey's Map with permission of the controller of His Majesty's Stationery Office, Crown copyright reserved.