

# MAES BACH ENERGY STORAGE SYSTEM

## PRE-APPLICATION CONSULTATION LANDSCAPE AND VISUAL IMPACT ASSESSMENT PART 6 of 7



Prepared for Net Zero Twenty Five  
November 2024





Viewpoint 1: View from Pound Farm Lane, looking south-east



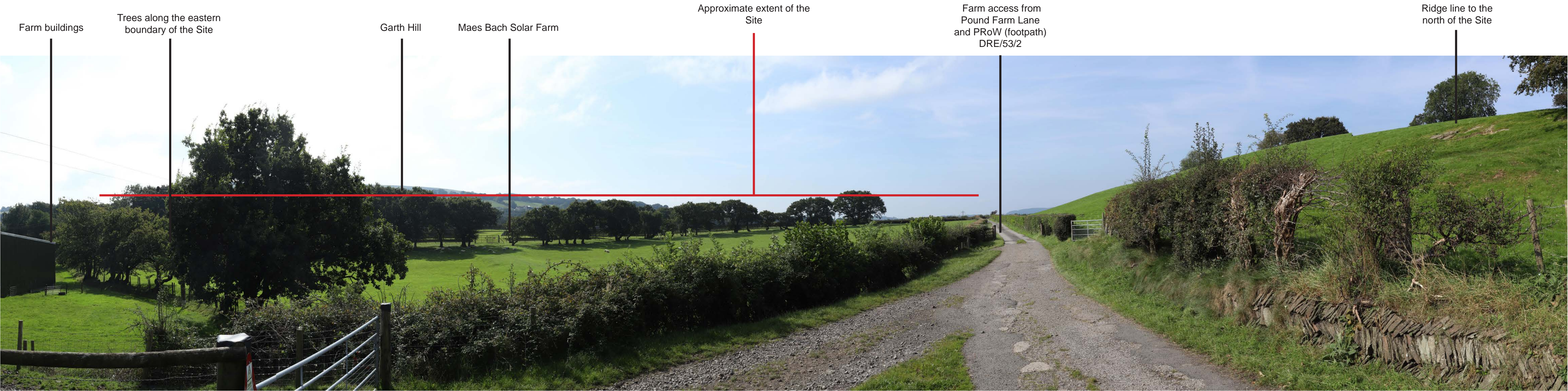
Viewpoint 2: View from PRow (footpath) DRE/50b/2, looking south-east

<div>Notes:</div> <div><div><ul style="list-style-type: none"><li>• Camera: Canon 6D MKII</li><li>• Camera Height: 1.6m</li><li>• Weather: Clear with sunny spells</li><li>• Photos Taken: 19/09/2024</li></ul></div><div><ul style="list-style-type: none"><li>• Type 1 visualisation prepared in accordance with LI Technical Guidance Note 06/19.</li><li>• This visualisation represents the context of the scheme and key features.</li><li>• The viewpoint locations were recorded using a handheld GPS.</li></ul></div></div>	Date: 08/10/2024	Project Name: Maes Bach ESS	Title: Viewpoint 1 and 2	<div>RHLA LTD</div> <div>Landscape Planning Consultancy</div>
	Scale: N/A	Client Name: Net Zero Twenty Five Limited	Figure Ref: Figure 6	





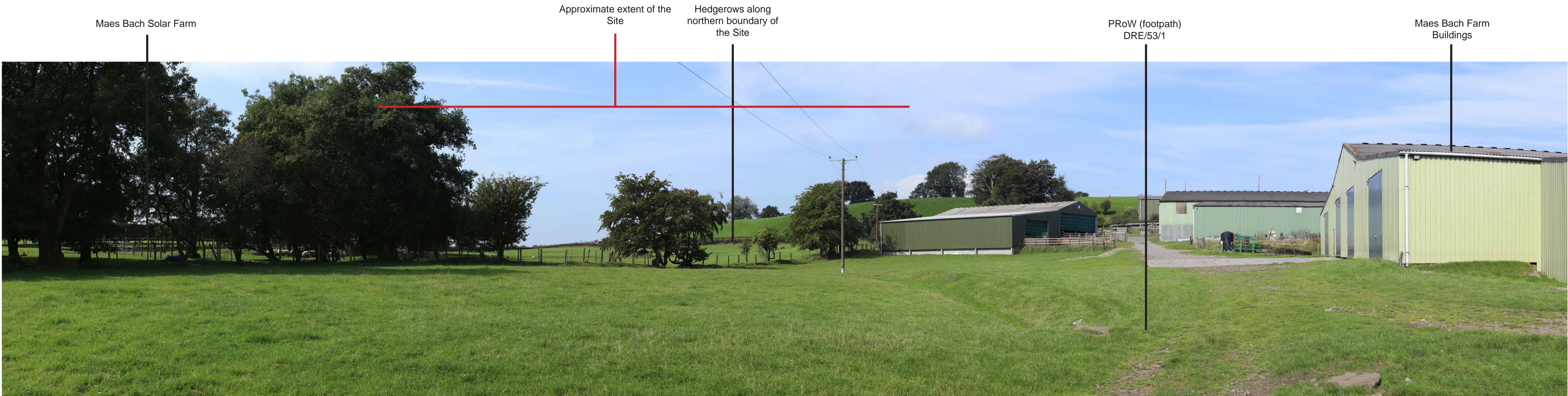
Viewpoint 3: View from PRow (footpath) DRE/53/2, looking south-east



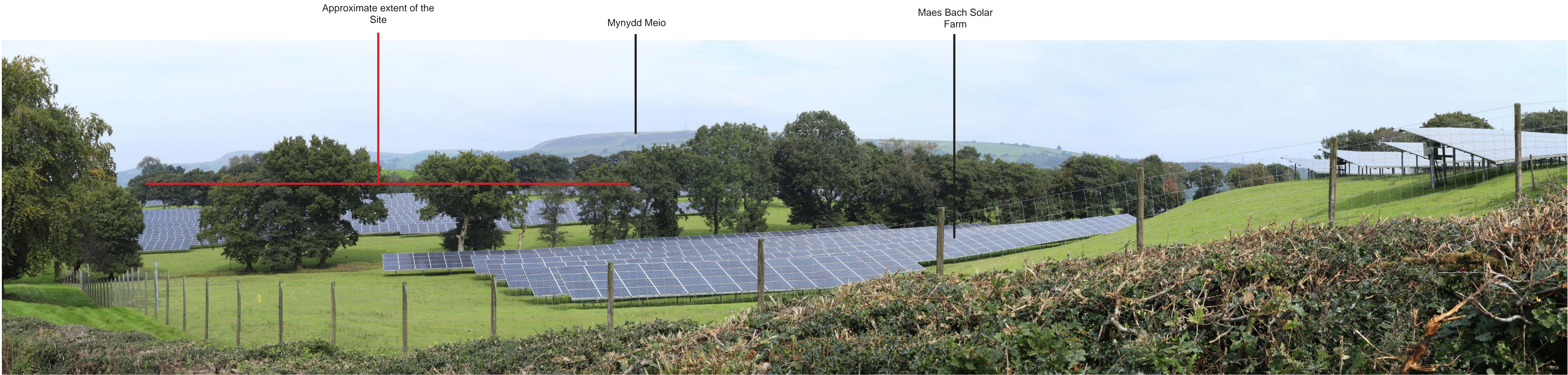
Viewpoint 4: View from PRow (footpath) DRE/53/2, looking south-west

<b>Notes:</b> <ul style="list-style-type: none"><li>• Camera: Canon 6D MKII</li><li>• Camera Height: 1.6m</li><li>• Weather: Clear with sunny spells</li><li>• Photos Taken: 19/09/2024</li></ul> <ul style="list-style-type: none"><li>• Type 1 visualisation prepared in accordance with LI Technical Guidance Note 06/19.</li><li>• This visualisation represents the context of the scheme and key features.</li><li>• The viewpoint locations were recorded using a handheld GPS.</li></ul>	<b>Date:</b> 08/10/2024	<b>Project Name:</b> Maes Bach ESS	<b>Title:</b> Viewpoint 3 and 4	<b>RHLA LTD</b> Landscape Planning Consultancy
	<b>Scale:</b> N/A	<b>Client Name:</b> Net Zero Twenty Five Limited	<b>Figure Ref:</b> Figure 7	





Viewpoint 5: View from PRow (footpath) DRE/53/1 looking north-west



Viewpoint 6: View from Pound Farm Lane looking north-east

<div>Notes:</div> <div><ul style="list-style-type: none"><li>• Camera: Canon 6D MKII</li><li>• Camera Height: 1.6m</li><li>• Weather: Clear with sunny spells</li><li>• Photos Taken: 19/09/2024</li></ul></div> <div><ul style="list-style-type: none"><li>• Type 1 visualisation prepared in accordance with LI Technical Guidance Note 06/19.</li><li>• This visualisation represents the context of the scheme and key features.</li><li>• The viewpoint locations were recorded using a handheld GPS.</li></ul></div>	<div>Date:</div> <div>08/10/2024</div>	<div>Project Name:</div> <div>Maes Bach ESS</div>	<div>Title:</div> <div>Viewpoint 5 and 6</div>	<div>RHLA LTD</div> <div>Landscape Planning Consultancy</div>
	<div>Scale:</div> <div>N/A</div>	<div>Client Name:</div> <div>Net Zero Twenty Five Limited</div>	<div>Figure Ref:</div> <div>Figure 8</div>	