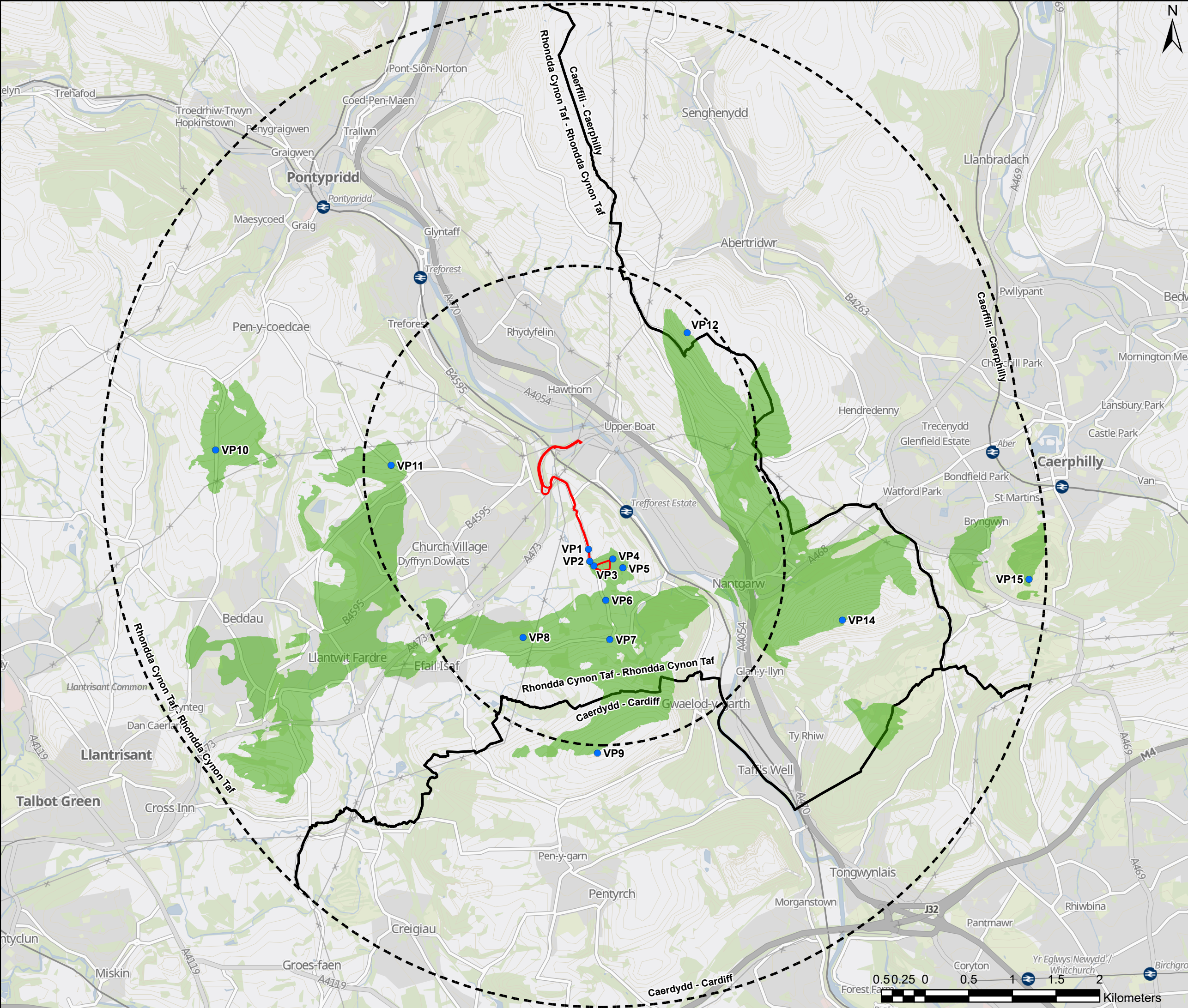


MAES BACH ENERGY STORAGE SYSTEM

PRE-APPLICATION CONSULTATION LANDSCAPE AND VISUAL IMPACT ASSESSMENT PART 5 of 7



Prepared for Net Zero Twenty Five
November 2024



RHLA LTD

Project Title

Maes Bach ESS

Client

Net Zero Twentyfive Limited

Drawing Title

Bare Earth Zone of Theoretical Visibility

General Notes

- 1. Do not scale from this drawing.
- 2. All dimensions, co-ordinates and levels are shown in meters unless otherwise stated.

- Site Boundary
- 2km & 5km Site Boundary Buffers
- Zone of Theoretical Visibility
- Viewpoints
- Local Authority Boundary

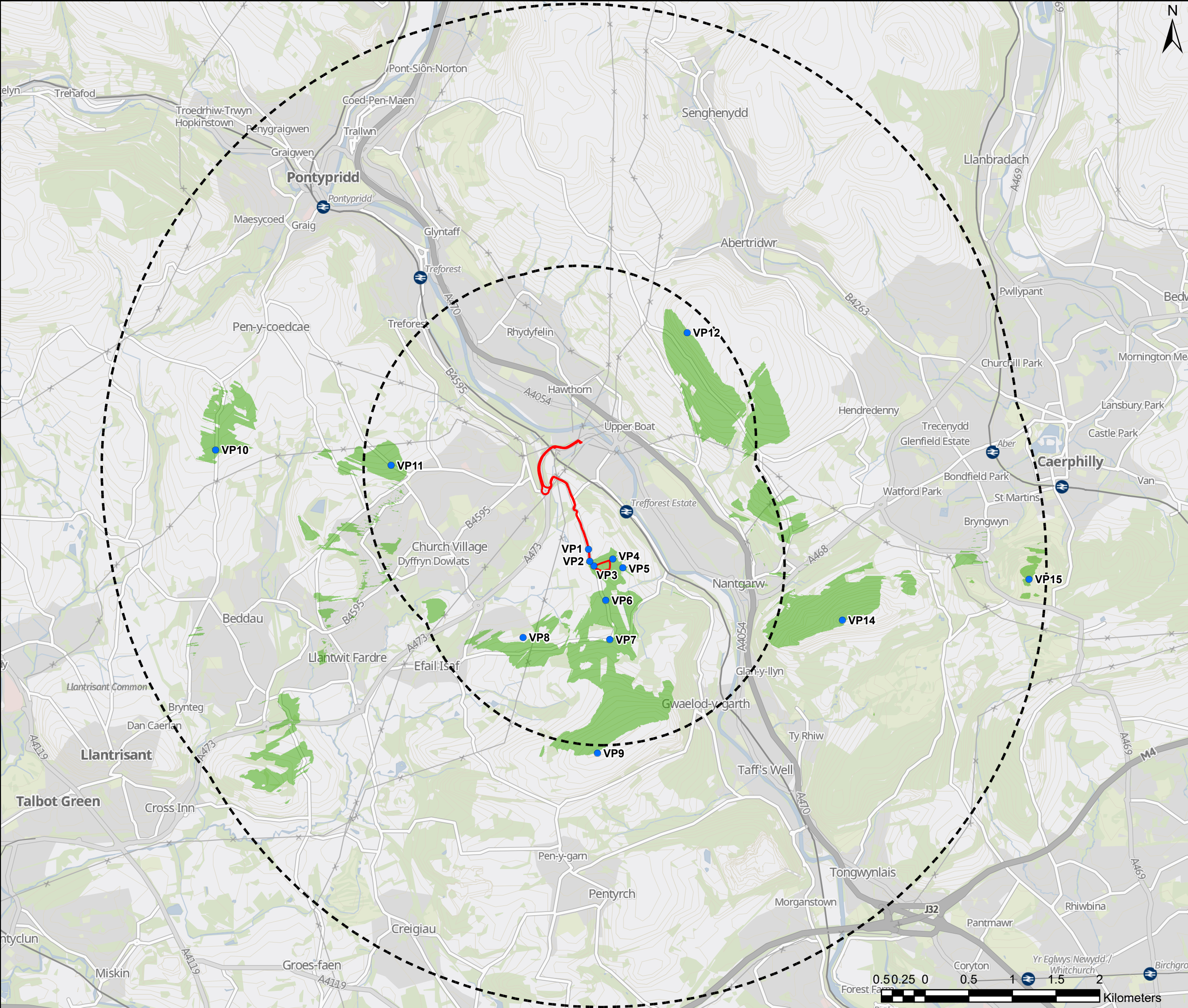
ZTV Production Information -
- DTM data used in calculations is OS Terrain 5m
- Calculations based on a bare earth survey
- Viewer height set at 1.7m
- Calculations include earth curvature and light refraction
N.B. This Zone of Theoretical Visibility (ZTV) image illustrates the theoretical extent of where the development will be visible from, assuming 100% visibility. It is generated using terrain data only and does not account for any screening that vegetation or the built environment may provide. It is, as such, 'a worst case' ZTV and the actual extents of visibility are likely to be less extensive.

Updated site boundary	DB/RH	2024-10-21	A
First Issue	DB/RH	2024-09-16	-
Revision	By/Check	Date	Suffix

© THIS DRAWING IS COPYRIGHT

Contains OS data © Crown Copyright and database right 2023
Contains data from OS Zoomstack

Drawn DB	Review EB	Approved RH	Date 2024-10-21
Drawing No FIGURE 4a			
Rev A			



RHLA LTD

Project Title
Maes Bach ESS

Client
Net Zero Twentyfive Limited

Drawing Title
Screened Zone of Theoretical Visibility

General Notes
1. Do not scale from this drawing.
2. All dimensions, co-ordinates and levels are shown in meters unless otherwise stated.

- Site Boundary
- 2km & 5km Site Boundary Buffers
- Zone of Theoretical Visibility
- Viewpoints

Screened ZTV Production Information -
- DTM data used in calculations is OS Terrain 5 that has been combined with OS Open Map Local data for woodland and buildings to create a Digital Surface Model (DSM).
- Additional Woodland and Buildings within study area are modelled at 15m and 8m respectively.
- Viewer height set at 1.7m
- Calculations include earth curvature and light refraction
N.B. This Screened Zone of Theoretical Visibility (SZTV) image illustrates the theoretical extent of where the development will be visible from, assuming 100% visibility, and includes the screening effect from vegetation and buildings, based on the assumptions stated above.

Updated site boundary	DB/RH	2024-10-21	A
First Issue	DB/RH	2024-09-16	-
Revision	By/Check	Date	Suffix

© THIS DRAWING IS COPYRIGHT
Contains OS data © Crown Copyright and database right 2023
Contains data from OS Zoomstack

Drawn DB	Review EB	Approved RH	Date 2024-10-21
Drawing No FIGURE 4b			
Rev A			

