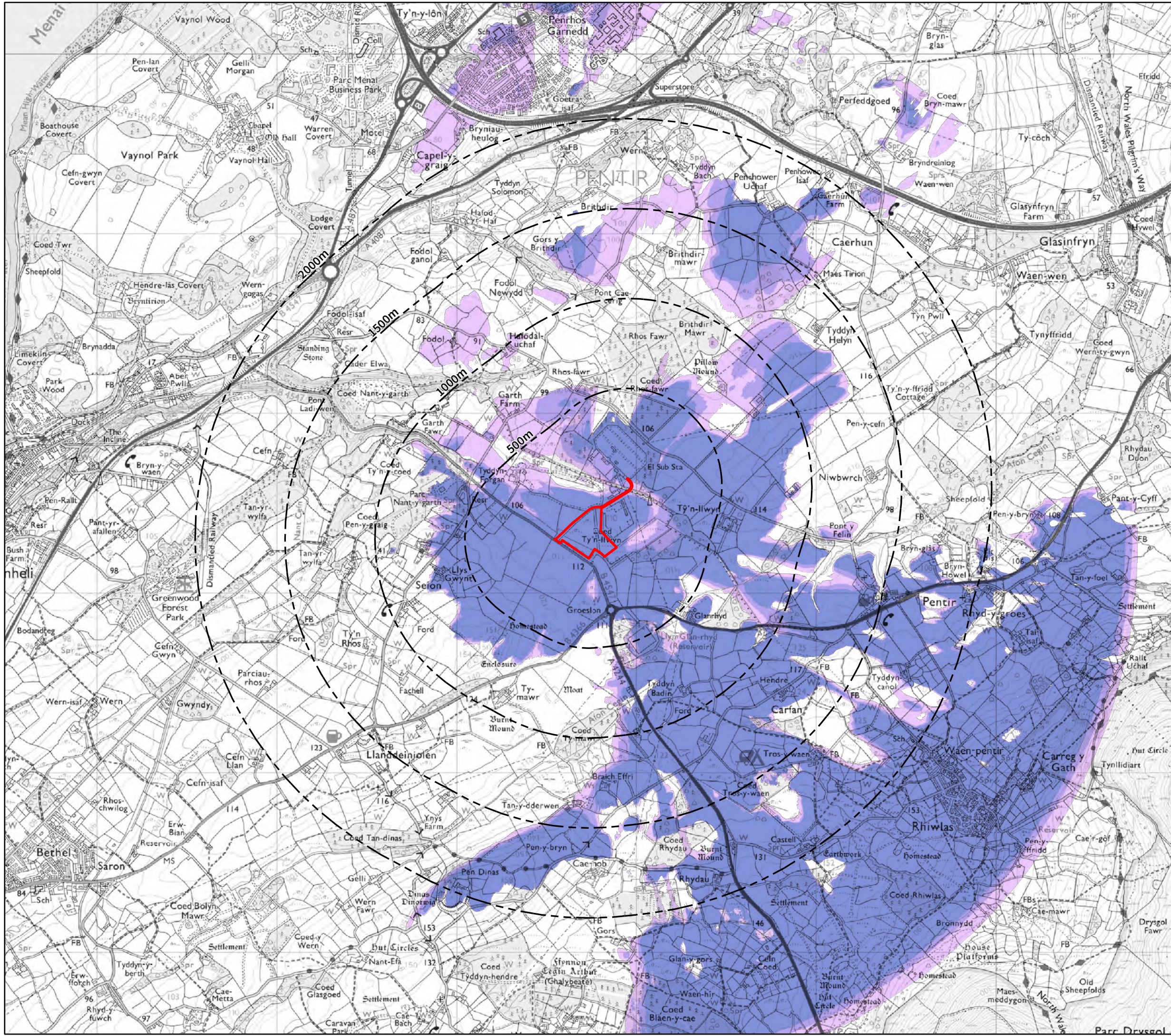


Net Zero Twenty Six Limited

Tyddyn Forgan ESS

Zone of Theoretical Visibility
Bare earth scenario

LA.08.1



Key

- Site
- Buffers from site at 500m intervals

Zone of Theoretical Visibility

Bare earth scenario

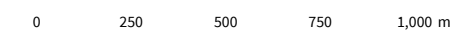
- Small part of development visible
- Moderate part of development visible
- Majority of development visible

Note:

The ZTV has been generated using a 1m resolution model derived from Welsh Government DTM LiDAR data. The proposed development is modelled at the following heights above existing ground level:

- ESS Units - 2.8m
- AUX Transformers - 2.2m
- Container units - 2.75m
- Water tank - 2.5m
- DNO control room - 5.6m
- Substation infrastructure - up to 6.8m
- Security Fence - 2.4m

Viewer height is set at 2m above existing ground level.



Scale @ A3 - 1:20,000



TTE Proj No	Drwn by	Date	Ch'ked by	Date	Appr'd by	Date	Scale @ A3	Suitability
B068934	TP	Feb 25	MP	Feb 25	EJ	Feb 25	1:20,000	S3
Client Proj No	Originator	Vol/System	Level/Location	Type/Code	Role	Number	Revision	
	TTE	00	XX	DR	L	0016	P01	

Tetra Tech Cardiff
Atlantic House, Greenwood Close, Cardiff Gate Business Park, Cardiff CF23 8RD
Tel: +44 29 2082 9000 www.tetratetecheurope.com

© Crown copyright and database rights 2025 Ordnance Survey AC0000808122.

© Tetra Tech Limited 2025. Registered in England number: 1959704