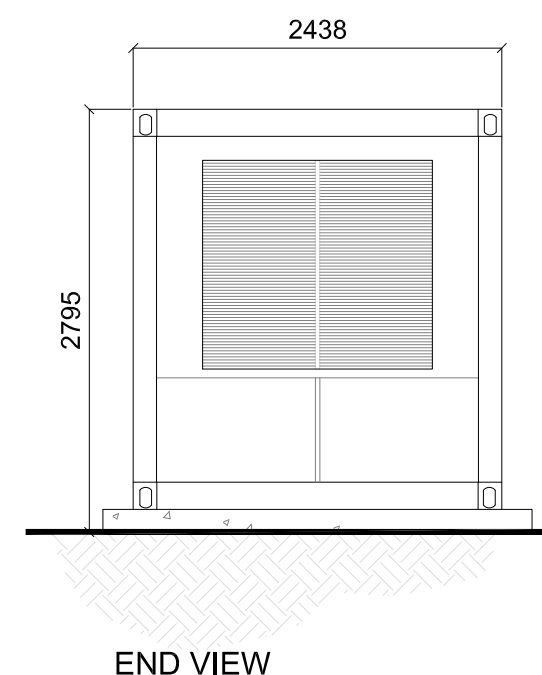
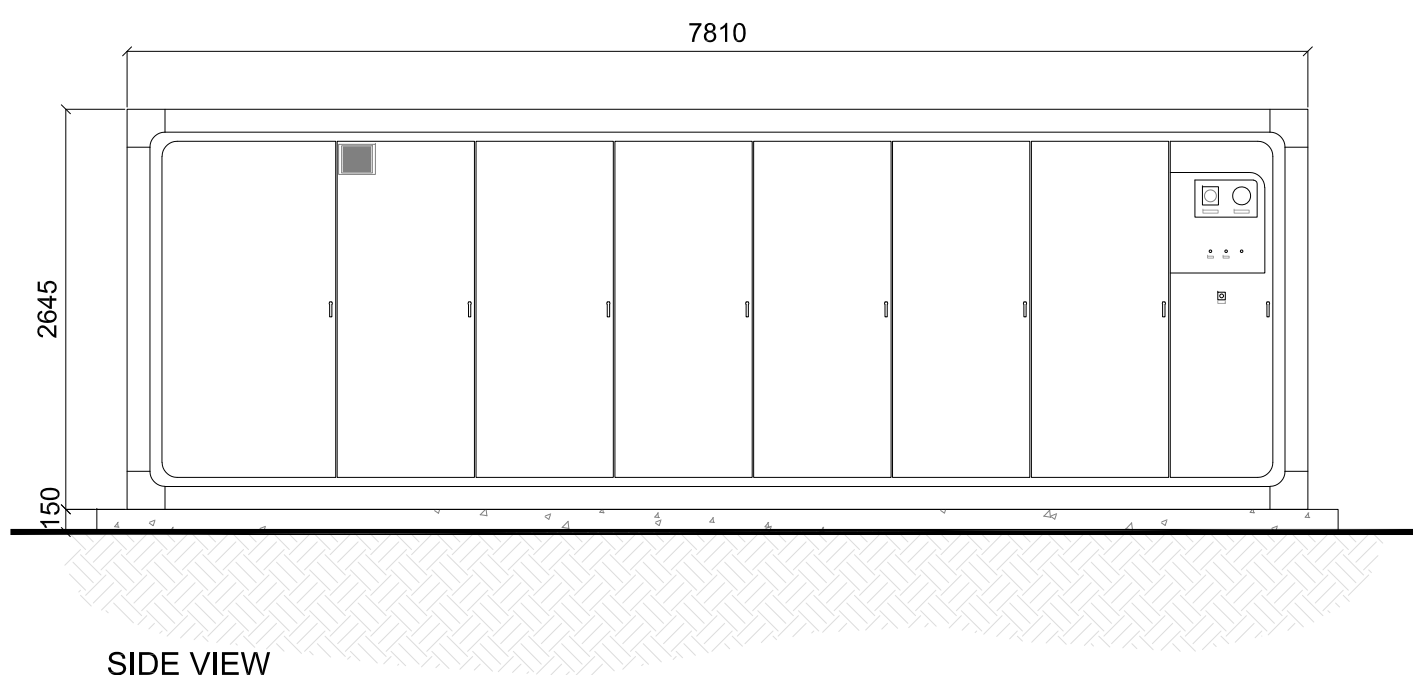
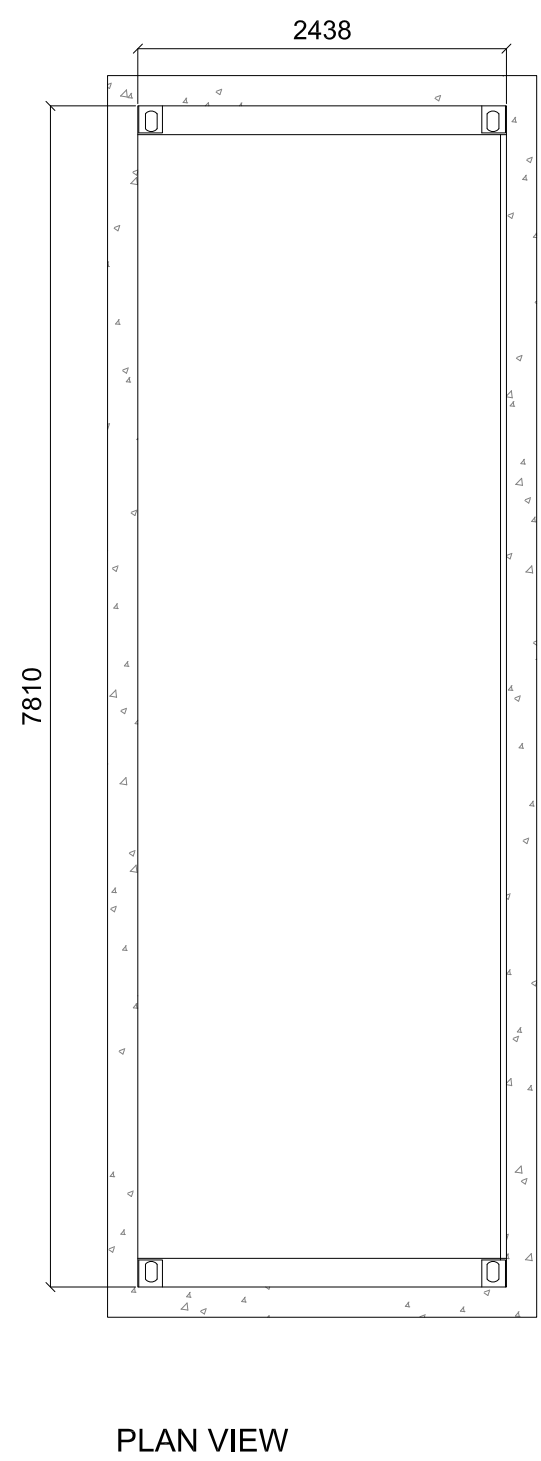
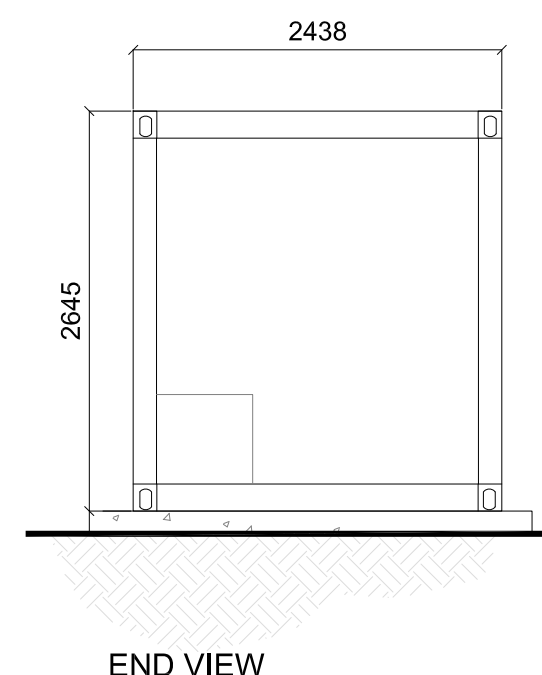
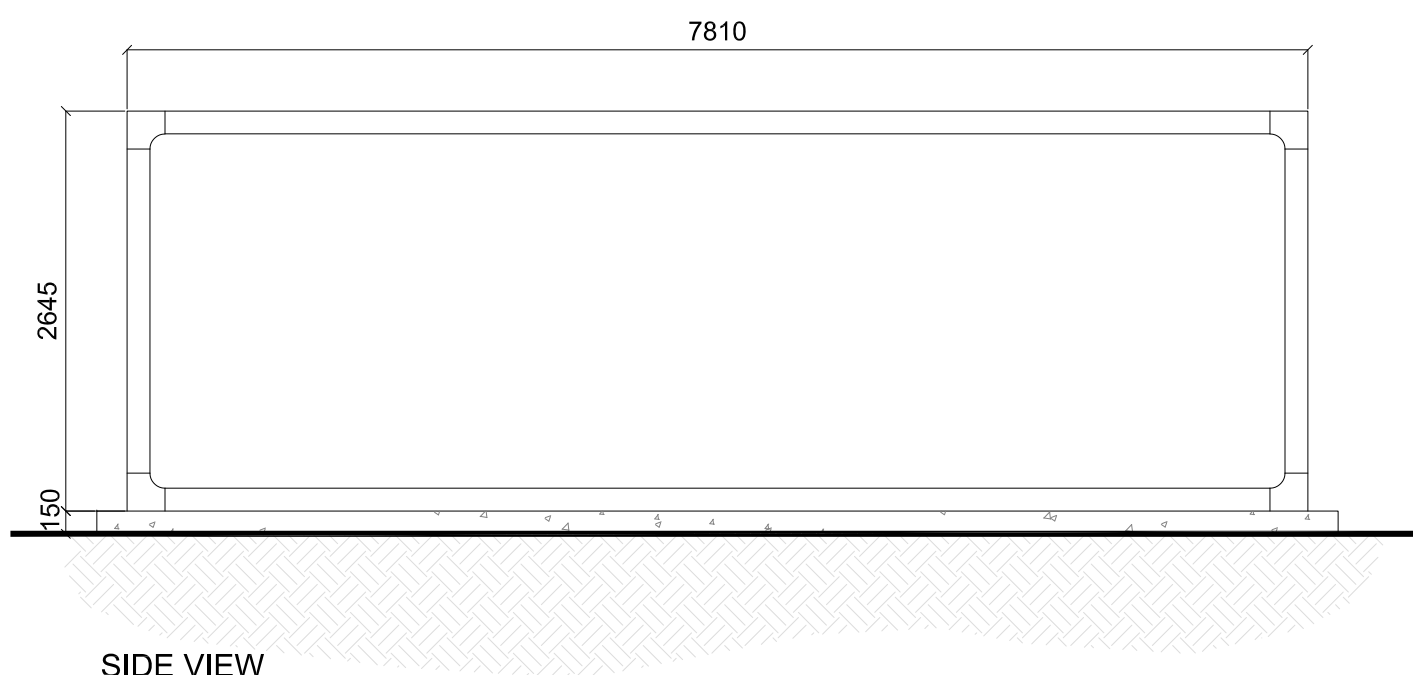


This drawing is the copyright of FIRSTWAY SOLAR Limited and must not be reproduced in whole or in part or used in any manner without their written permission.
 Scaled dimensions must not be taken from this drawing. All dimensions are to be confirmed on site prior to commencement of work.

Revisions:

Revision	Date	Revision Notes	Drawn	Inspected
01	12.09.24	First Issue	OM	JH



LEGEND:

Project:
Maes Bach, Pontypridd

Consultant:
 Net Zero Twentyfive Limited

Net Zero Twentyfive Ltd
 Foresters Hill,
 25-27 Westow Street,
 London, SE19 3RY
 Tel: +44 (0) 2071172077
 Mob: +44 (0) 7737651394

Drawn by:
 CADmando
 2D, 3D CAD & BIM SERVICES

CADmando Design & Draughting Solutions Ltd
 The Long Barn, The Courtyard, Seven Drive, Tewkesbury
 Business Park, GL20 9GD
 Tel: +44 (0) 1684 858019
 Mob: +44 (0) 7814439910

Status:
PLANNING

Drawing Title:
**Standard Drawing:
 Hybrid ESS Unit**

Drawn: OM	Checked: JH	First Issued: 12.09.2024
Project Code: FST025-	Drawing Number: SD-07	Revision: 01
Sheet Size: A3	Scale: 1:50	

