

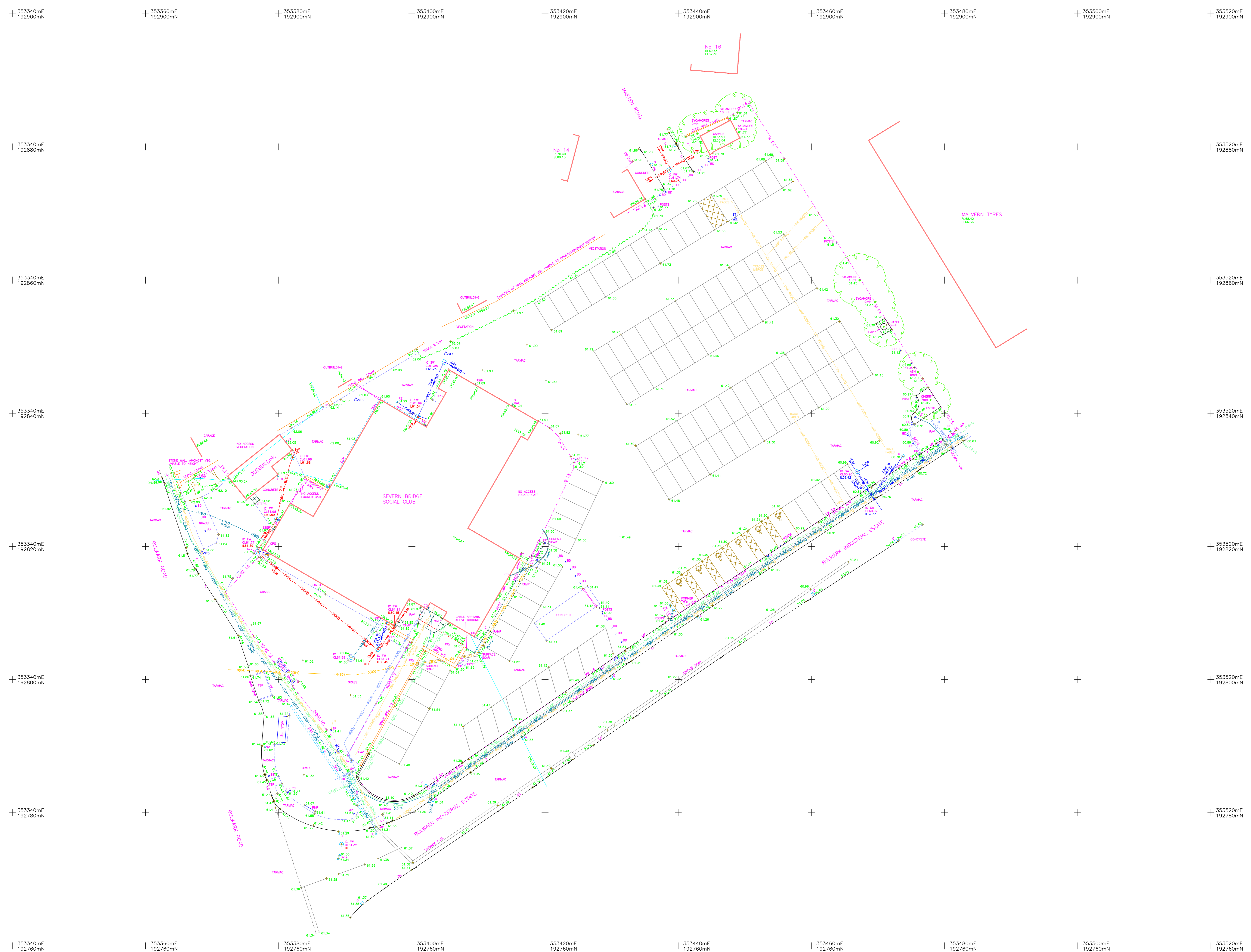


Original Drawing Size: A0

**NOTES:-**  
 The accuracy and content of this drawing are dependent on the original specification and ED should be completed before use in other forms.  
 Where appropriate services are shown, all reasonable care has been taken within the limits of the original specification and the contractor is responsible for the accuracy of any work done before completion and any work done to the extent of the work not indicated by ground stations and the detection equipment no guarantee can be given that all services have been recorded. The notes should be read in full.  
 All reasonable care has been taken in the survey and all services are shown to the best of our ability. It is the responsibility of the contractor to ensure that the specification and cost of materials are as stated.  
 Levels shown at points are channel level unless stated.

**LEGEND**

Feature	Symbol	Feature	Symbol
01 Boundary	—	01 Overflow Pipe	—
02 Boundary	—	02 Down Pipe	—
03 Boundary	—	03 Down Pipe	—
04 Boundary	—	04 Down Pipe	—
05 Boundary	—	05 Down Pipe	—
06 Boundary	—	06 Down Pipe	—
07 Boundary	—	07 Down Pipe	—
08 Boundary	—	08 Down Pipe	—
09 Boundary	—	09 Down Pipe	—
10 Boundary	—	10 Down Pipe	—
11 Boundary	—	11 Down Pipe	—
12 Boundary	—	12 Down Pipe	—
13 Boundary	—	13 Down Pipe	—
14 Boundary	—	14 Down Pipe	—
15 Boundary	—	15 Down Pipe	—
16 Boundary	—	16 Down Pipe	—
17 Boundary	—	17 Down Pipe	—
18 Boundary	—	18 Down Pipe	—
19 Boundary	—	19 Down Pipe	—
20 Boundary	—	20 Down Pipe	—
21 Boundary	—	21 Down Pipe	—
22 Boundary	—	22 Down Pipe	—
23 Boundary	—	23 Down Pipe	—
24 Boundary	—	24 Down Pipe	—
25 Boundary	—	25 Down Pipe	—
26 Boundary	—	26 Down Pipe	—
27 Boundary	—	27 Down Pipe	—
28 Boundary	—	28 Down Pipe	—
29 Boundary	—	29 Down Pipe	—
30 Boundary	—	30 Down Pipe	—
31 Boundary	—	31 Down Pipe	—
32 Boundary	—	32 Down Pipe	—
33 Boundary	—	33 Down Pipe	—
34 Boundary	—	34 Down Pipe	—
35 Boundary	—	35 Down Pipe	—
36 Boundary	—	36 Down Pipe	—
37 Boundary	—	37 Down Pipe	—
38 Boundary	—	38 Down Pipe	—
39 Boundary	—	39 Down Pipe	—
40 Boundary	—	40 Down Pipe	—
41 Boundary	—	41 Down Pipe	—
42 Boundary	—	42 Down Pipe	—
43 Boundary	—	43 Down Pipe	—
44 Boundary	—	44 Down Pipe	—
45 Boundary	—	45 Down Pipe	—
46 Boundary	—	46 Down Pipe	—
47 Boundary	—	47 Down Pipe	—
48 Boundary	—	48 Down Pipe	—
49 Boundary	—	49 Down Pipe	—
50 Boundary	—	50 Down Pipe	—
51 Boundary	—	51 Down Pipe	—
52 Boundary	—	52 Down Pipe	—
53 Boundary	—	53 Down Pipe	—
54 Boundary	—	54 Down Pipe	—
55 Boundary	—	55 Down Pipe	—
56 Boundary	—	56 Down Pipe	—
57 Boundary	—	57 Down Pipe	—
58 Boundary	—	58 Down Pipe	—
59 Boundary	—	59 Down Pipe	—
60 Boundary	—	60 Down Pipe	—
61 Boundary	—	61 Down Pipe	—
62 Boundary	—	62 Down Pipe	—
63 Boundary	—	63 Down Pipe	—
64 Boundary	—	64 Down Pipe	—
65 Boundary	—	65 Down Pipe	—
66 Boundary	—	66 Down Pipe	—
67 Boundary	—	67 Down Pipe	—
68 Boundary	—	68 Down Pipe	—
69 Boundary	—	69 Down Pipe	—
70 Boundary	—	70 Down Pipe	—
71 Boundary	—	71 Down Pipe	—
72 Boundary	—	72 Down Pipe	—
73 Boundary	—	73 Down Pipe	—
74 Boundary	—	74 Down Pipe	—
75 Boundary	—	75 Down Pipe	—
76 Boundary	—	76 Down Pipe	—
77 Boundary	—	77 Down Pipe	—
78 Boundary	—	78 Down Pipe	—
79 Boundary	—	79 Down Pipe	—
80 Boundary	—	80 Down Pipe	—
81 Boundary	—	81 Down Pipe	—
82 Boundary	—	82 Down Pipe	—
83 Boundary	—	83 Down Pipe	—
84 Boundary	—	84 Down Pipe	—
85 Boundary	—	85 Down Pipe	—
86 Boundary	—	86 Down Pipe	—
87 Boundary	—	87 Down Pipe	—
88 Boundary	—	88 Down Pipe	—
89 Boundary	—	89 Down Pipe	—
90 Boundary	—	90 Down Pipe	—
91 Boundary	—	91 Down Pipe	—
92 Boundary	—	92 Down Pipe	—
93 Boundary	—	93 Down Pipe	—
94 Boundary	—	94 Down Pipe	—
95 Boundary	—	95 Down Pipe	—
96 Boundary	—	96 Down Pipe	—
97 Boundary	—	97 Down Pipe	—
98 Boundary	—	98 Down Pipe	—
99 Boundary	—	99 Down Pipe	—
100 Boundary	—	100 Down Pipe	—



**NOTES:**  
 All levels and co-ordinates are related to the datum described.  
 The horizontal control of this survey is based on Ordnance Survey grid as transferred from OS maps and the vertical control is based on the datum described.  
 The accuracy of this survey is based on the accuracy of the original data and the accuracy of the survey is based on the accuracy of the original data and the accuracy of the survey is based on the accuracy of the original data.

This Survey has been carried out in accordance with BS 5521 Part 1:2006 and BS 5521 Part 2:2006. The accuracy of this survey is based on the accuracy of the original data and the accuracy of the survey is based on the accuracy of the original data.

The accuracy of this survey is based on the accuracy of the original data and the accuracy of the survey is based on the accuracy of the original data.

Station	Easting	Northing	Level	Type
1	353440.00	192760.00	61.00	BM
2	353440.00	192760.00	61.00	BM
3	353440.00	192760.00	61.00	BM
4	353440.00	192760.00	61.00	BM
5	353440.00	192760.00	61.00	BM
6	353440.00	192760.00	61.00	BM
7	353440.00	192760.00	61.00	BM

Rev.	Job No.	Date	Revision Detail	Surveyor	Check

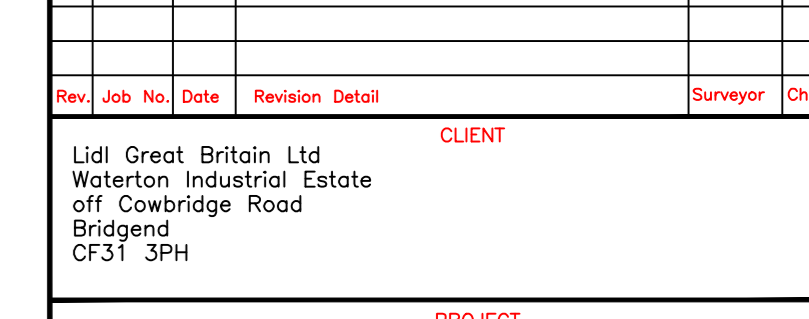
**CLIENT**  
 Ltd Great Britain Ltd  
 Bulwark Industrial Estate  
 off Cowbridge Road  
 Bridgend  
 CF31 3PH

**PROJECT**  
 Topographic and Services Survey  
 Severn Bridge Club  
 Bulwark Road  
 Chepstow  
 NP16 5JN

Job No.	Surveyor	Checked	Date	Scale
19190	T. C. Payne	R. H.	Nov. 2020	1:200

**EDI SURVEYS LTD**  
 163-165 Roneleigh Road, Ipswich, Suffolk IP2 0AH  
 Telephone: 01473 21222 Fax: 01473 221600  
 Email: enquiries@edisurveys.co.uk

Our Services: Topographic Surveys, Instrument Building, Surveying, GPS, Systems and Control, 3D Laser Scanning, Utility Surveying and Drainage Investigation. Click on the links to visit our website and find out more.



DRAWING No: 19190/T/01-01