

Schedule of Accommodation

Table with 3 columns: Number, Name, Area. Includes categories: Ground, Ancillary, Circulation, Entrance and Reception, Plant, Secusion, Therapy, Tribunal, and Ward 1.

Schedule of Accommodation

Table with 3 columns: Number, Name, Area. Includes categories: Lounge, Multi Faith Room, Staff Base, Servery Kitchen, Dining Room, Group Room, Quiet Lounge, Assisted Bed, Corridor, Group Room, Quiet Lounge, Assisted Bed, Dirty Util, Assisted Bed, Bed 9, Dirty Util, Acc. WC, WC, Store, Srv, Bed 8, Bed 7, Bed 6, Bed 5, Srv, Bed 4, Patient Laundry, Corridor, Staff Base, Bed 3, Bed 2, Bed 1, Srv, Bed 11, Srv, Bed 10, Asst. Bathroom, Linen, Ward Man., Pmt Poss., Srv, Corridor, and Multi Faith Room.

Schedule of Accommodation

Table with 3 columns: Number, Name, Area. Includes categories: Staff Base, Servery Kitchen, Dining Room, Group Room, Quiet Lounge, Assisted Bed, Bed 11, Dirty Util, Acc. WC, Pmt Poss., Room, Bed 10, Bed 9, Room, Bed 8, Bed 7, Room, Bed 6, Bed 5, Staff Base, Corridor, Patient Laundry, Bed 2, Bed 1, Srv, Bed 4, Srv, Bed 3, Asst. Bathroom, Linen, Store, Ward Manager, Corridor, Store, Room, and Corridor.

Schedule of Accommodation

Table with 3 columns: Number, Name, Area. Includes categories: Corridor, Stairs, Lift, Stair, Corridor, Office, Office, Records Store, MDT Room, Meeting Room, Consultant Office, Consultant Office, Training Room, Plant, Lobby, Plant Room, Tank Room, Server Room, Staff Facilities, F Staff Change/Loc, F Staff Shwr, WC, Acc WC, WC, M Staff Shwr, M Staff Change/Loc, Staff Room, Ward 2: 44, Ground: 125, First, Ancillary, Cleaners, Patient Poss. St., Ancillary: 2, Circulation, Corridor.

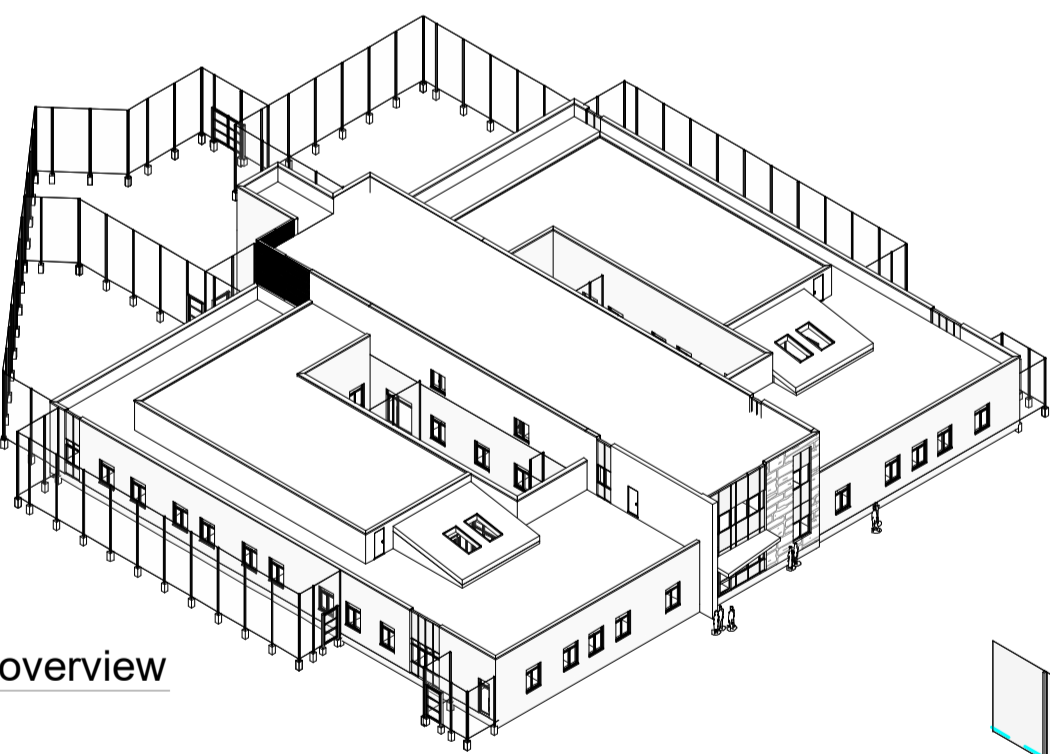
- Designs referencing and based on: WHBN 03-01 - Adult Acute Mental Units - NHS Wales; Environmental Design Guide: Adult Medium Secure Services - Department of Health; Best Practice Guidance - Specification for adult medium secure services - Department of Health; Standards for Forensic Mental Health Services: Low and Medium Secure Care - Royal College of Psychiatrists; Confirmation from Priory that sprinkler or similar fire fighting equipment would be required for any future development on this site; Proposal looks to re-use as much footprint of the recently razed Treowen building as possible, while achieving current space standards and visibility for 2 x 12 bed wards.

Comparison

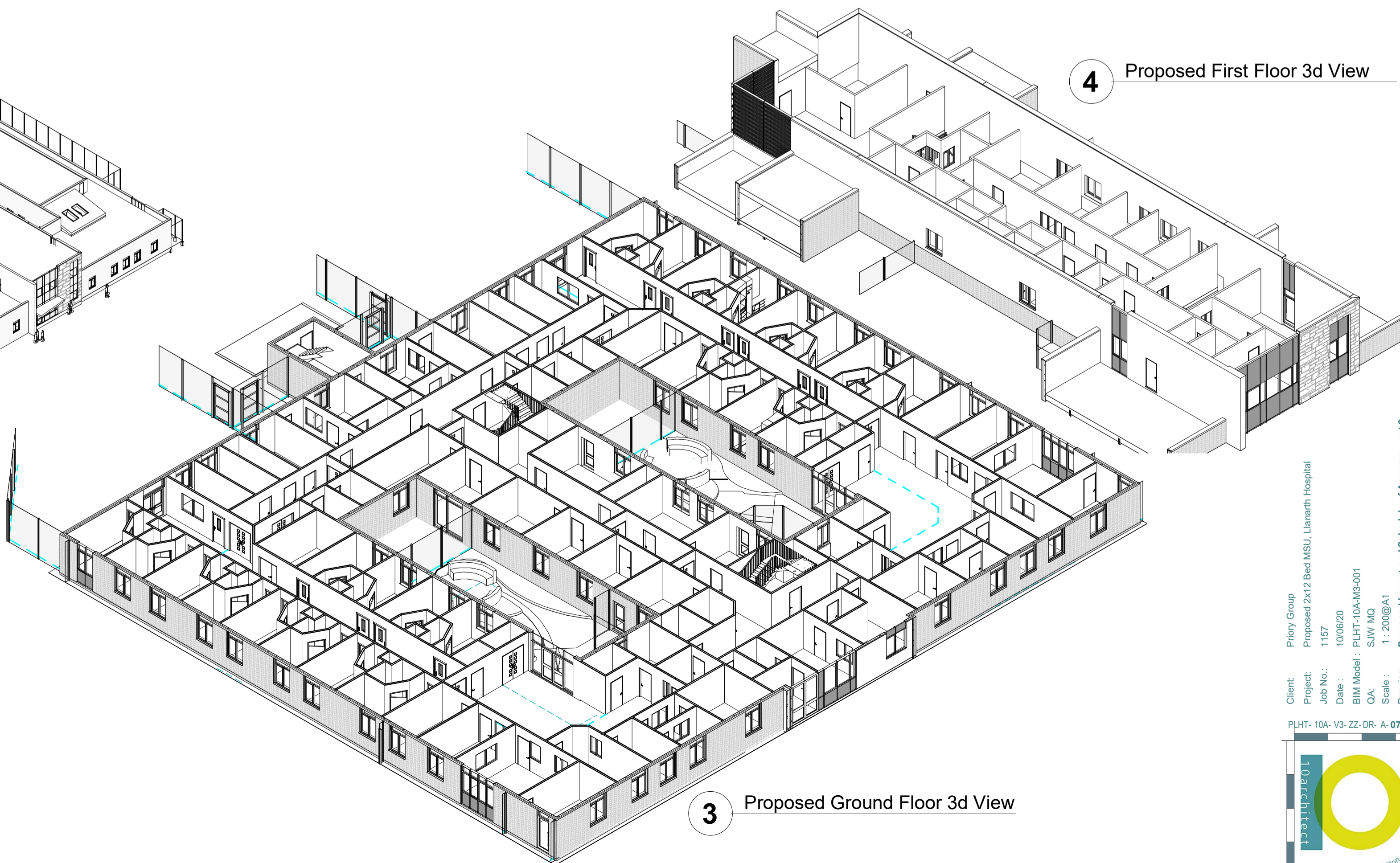
Table comparing existing Treowen areas (18 Beds, Ground Floor: 1160m2, First Floor: 240m2, Total: 1400m2) with proposed areas (Difference: 613m2, Rooms causing significant increase in area: 63m2, Tribanal Suite: 80m2, etc.) and Total additional areas causing increase: 605m2.



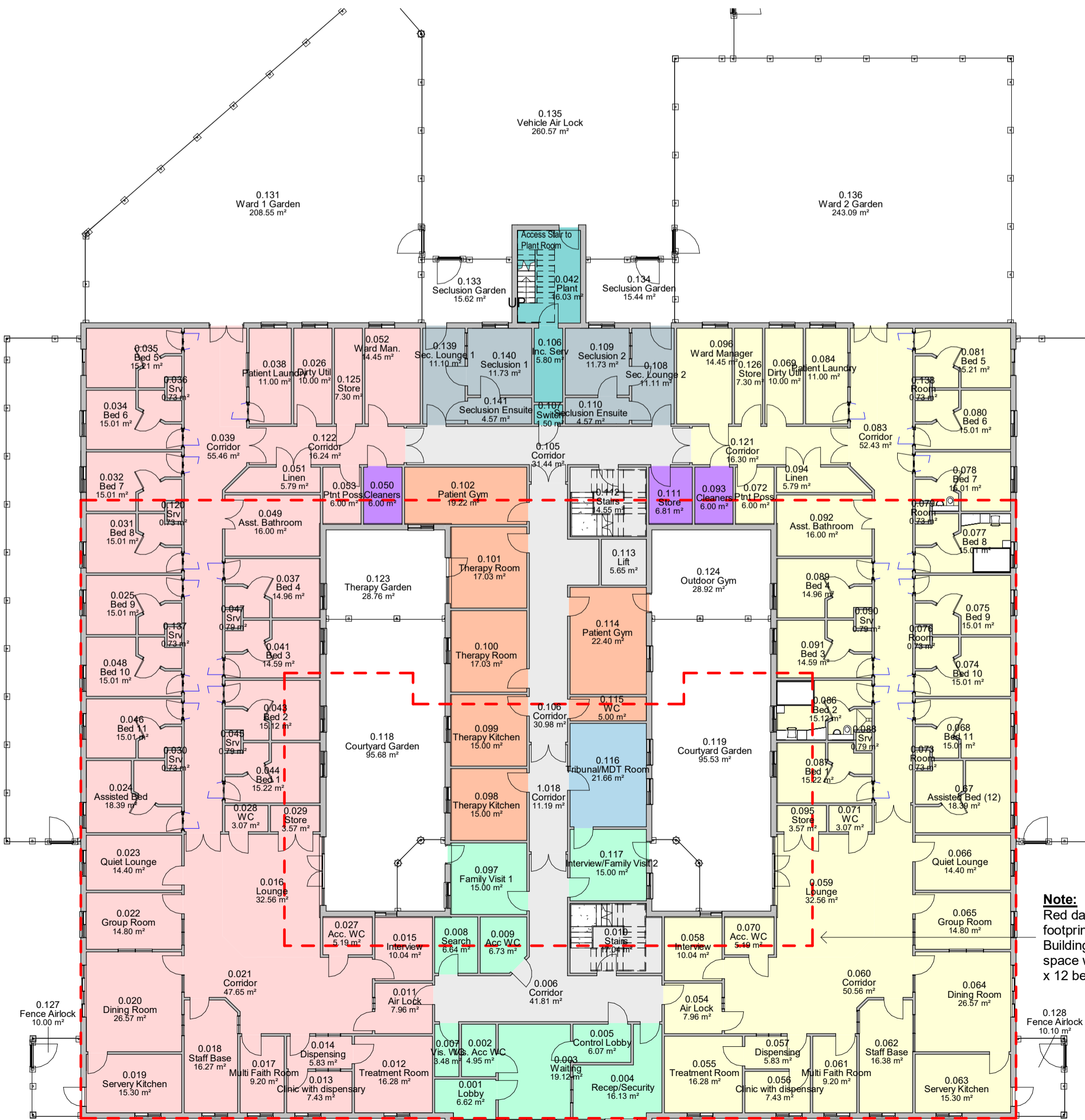
2 Proposed First Floor Plan 1: 200 Ref Sheet: 2220



5 3d overview



3 Proposed Ground Floor 3d View



1 Proposed Ground Floor Plan 1: 200 Ref Sheet: 2220

Note: Red dashed line denotes existing footprint of recently razed Treowen Building to identify where additional space would be required to achieve 2 x 12 bed wards

This drawing is copyright. Do not scale dimensions from this drawing "if in doubt ask". This drawing is to be read in conjunction with all other relevant drawings and specifications. All discrepancies on this drawing are to be reported to the architect. Do not modify any element of this drawing. Use drawing only for purposes (if issued).